

Катало прод к ии DJ PUMP

По вопросам продаж и поддержки обращайтесь:

Алматы (727)345-47-04
Ангарск (3955)60-70-56
Архангельск (8182)63-90-72
Астрахань (8512)99-46-04
Барнаул (3852)73-04-60
Белгород (4722)40-23-64
Благовещенск (4162)22-76-07
Брянск (4832)59-03-52
Владивосток (423)249-28-31
Владикавказ (8672)28-90-48
Владимир (4922)49-43-18
Волгоград (844)278-03-48
Вологда (8172)26-41-59
Воронеж (473)204-51-73
Екатеринбург (343)384-55-89

Иваново (4932)77-34-06
Ижевск (3412)26-03-58
Иркутск (395)279-98-46
Казань (843)206-01-48
Калининград (4012)72-03-81
Калуга (4842)92-23-67
Кемерово (3842)65-04-62
Киров (8332)68-02-04
Коломна (4966)23-41-49
Кострома (4942)77-07-48
Краснодар (861)203-40-90
Красноярск (391)204-63-61
Курск (4712)77-13-04
Курган (3522)50-90-47
Липецк (4742)52-20-81

Магнитогорск (3519)55-03-13
Москва (495)268-04-70
Мурманск (8152)59-64-93
Набережные Челны (8552)20-53-41
Нижегород (831)429-08-12
Новокузнецк (3843)20-46-81
Ноябрьск (3496)41-32-12
Новосибирск (383)227-86-73
Омск (3812)21-46-40
Орел (4862)44-53-42
Оренбург (3532)37-68-04
Пенза (8412)22-31-16
Петрозаводск (8142)55-98-37
Псков (8112)59-10-37
Пермь (342)205-81-47

Ростов-на-Дону (863)308-18-15
Рязань (4912)46-61-64
Самара (846)206-03-16
Санкт-Петербург (812)309-46-40
Саратов (845)249-38-78
Севастополь (8692)22-31-93
Саранск (8342)22-96-24
Симферополь (3652)67-13-56
Смоленск (4812)29-41-54
Сочи (862)225-72-31
Ставрополь (8652)20-65-13
Сургут (3462)77-98-35
Сыктывкар (8212)25-95-17
Тамбов (4752)50-40-97
Тверь (4822)63-31-35

Тольятти (8482)63-91-07
Томск (3822)98-41-53
Тула (4872)33-79-87
Тюмень (3452)66-21-18
Ульяновск (8422)24-23-59
Улан-Удэ (3012)59-97-51
Уфа (347)229-48-12
Хабаровск (4212)92-98-04
Чебоксары (8352)28-53-07
Челябинск (351)202-03-61
Череповец (8202)49-02-64
Чита (3022)38-34-83
Якутск (4112)23-90-97
Ярославль (4852)69-52-93

Россия +7(495)268-04-70

Казахстан +7(727)345-47-04

Беларусь +(375)257-127-884

Узбекистан +998(71)205-18-59

Киргизия +996(312)96-26-47

эл.почта: dj@nt-rt.ru || сайт: <https://dj-pump.nt-rt.ru/>



COMPANY PROFILE

DJ Pump specializes in R & D, production of diaphragm pump and pump parts. Headquartered in JiangSu Province, China.

DJ Pump has accumulated a wealth of scientific and technological knowledge and sales channels worldwide. Our company's Products Division has a team of excellent AODDP specialists. Over the years, we keep on improving our technical ability and the stability of our products. Based on excellent performance, reliable quality and dedicated service, DJ Pump and the products have won many professional certificates and earned great customer recognition. DJ Pump has been widely sold in North America, South America, Europe, Southeast Asia and China markets.

*** View our Company Introduction Brochure for detail. ***

CONTENTS

DJ Pump Pump List	2	DJ pump fit Aro Series	29
DJ Pump fit Sandpiper Series	3-14	DJ Pump factory tour	30
Explanation of pump nomenclature ..	4	DJ pump DJ E5 Series	31-32
Professional Industry Model	13-14	DJ pump Surge Damper	33-34
DJ Pump Heavy Duty	17-22	DJ Pump Spares	35
DJ Pump fit Wilden Series	23-28	DJ Pump accessories	36

DJ Pump List: the pumps we can offer

Size	Material	Compatible with															
		Sandpiper										ARO		Wilden (T)	Versa-Matic		
		SD Ball	HD Flap	HD Ball	Dry Powder Flap	Dry Powder Ball	Lithium battery	Mining	Food sanitary	Gas driven	Surge damper	PRO (666)	EXP (PD)				
1/4"	PP	✓													✓		
	PVDF	⌚													✓		
1/2"	PP	✓										✓				✓	
	PVDF	✓															
	Conductive POM											✓					
	Aluminum	✓						✓		✓		✓					
	Stainless	✓						✓	⌚	✓		✓				✓	
	Cast Iron																
3/4"	PP	✓															
	PVDF	✓															
1"	PP	✓					✓					✓					
	PVDF	✓															
	Aluminum	✓					✓	✓		✓		✓	✓		✓		
	Stainless	✓		✓			✓	✓	✓	✓	✓	✓	✓				
	Cast Iron											✓	✓				
1 1/2"	PP	✓					✓					✓					
	PVDF	✓															
	Aluminum	✓			✓	✓	✓	✓		✓		✓	✓		✓		
	Stainless	✓			✓	✓	✓	✓	✓	✓	✓	✓	⌚				
	Cast Iron	✓						✓				✓					
2"	PP	✓					✓					✓					
	PVDF	✓															
	Aluminum	✓	✓		✓	✓	✓	✓		✓		✓	✓		✓		
	Stainless	✓	✓		✓	✓	✓	✓	✓	✓	✓	✓	✓				
	Cast Iron	✓						✓				✓	✓				
3"	PP	✓					✓										
	PVDF	⌚															
	Aluminum	✓	✓		✓	✓	✓	✓		✓		✓	✓		✓		
	Stainless	✓				✓	✓	✓	✓	✓	✓	✓	✓				
	Cast Iron	✓						✓				✓	✓				
4"	Aluminum		✓		✓												

⌚ Coming Soon

*Note: Brands mentioned are only for reference. No original brands available. SANDPIPER® is a registered trademark of Warren Rupp Company (IDEX Corp).

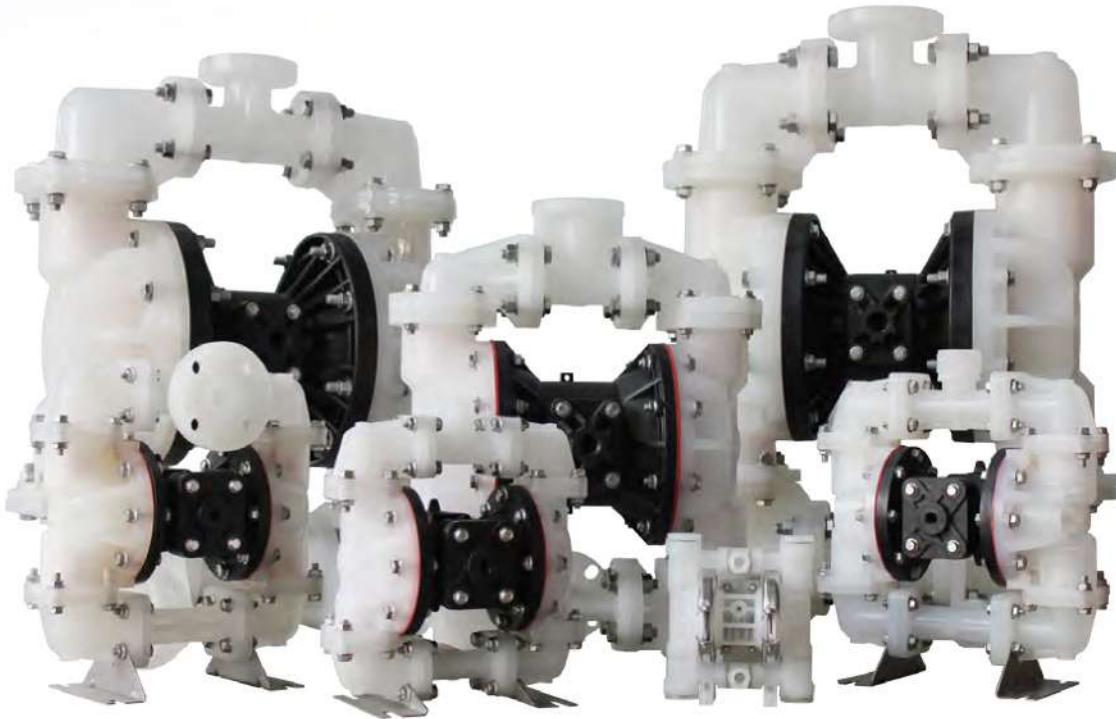
WILDEN® is a registered trademark of PSG, a Dover Company.

ARO® is a registered trademark of Ingersoll Rand Company.

Versa-Matic® is a registered trademark of Versa-Matic Pump Company (Warren Rupp).

1. DJ-S Series

Compatible with Sandpiper



Explanation of Pump Nomenclature for Series Compatible with Sandpiper

Pump Series

- **DJ** Standard Food
- **DJT** Processing Gas
- **DJG** Operated
- **DJL** Lithium Battery
- **BQG** Mining
- **DJF** Dry Powder
- **DJHDF** Heavy Duty Flap
- **DJHDB** Heavy Duty Ball

Pump Size

- **02** 1/4"
- **05** 1/2"
- **07** 3/4"
- **10** 1" Small
- **1F** 1" Full Flow
- **15** 1-1/2"
- **20** 2"
- **30** 3"

Design Level

- **01** Level 1
- **02** Level 2, Newly Designed

Wetted Material

- **A** Aluminum
- **I** Cast Iron
- **S** Stainless Steel 316
- **X** Unpainted Aluminum
- **P** PP
- **K** PVDF

Non-Wetted Material Options

- **A** Aluminum
- **S** Stainless Steel
- **P** PP
- **X** Unpainted Aluminum
- **Y** Painted Aluminum with Stainless Steel Hardware
- **W** White Epoxy Coated Aluminum

Diaphragm/Check Valve Ball Materials

- **1** Santoprene / Santoprene
- **2** PTFE Santoprene / PTFE
- **3** Neoprene / Santoprene
- **4** Hytrel / Santoprene
- **5** Buna-N / PTFE
- **6** Hytrel / Neoprene
- **B** Buna-N / Buna-N
- **C** Viton / PTFE
- **E** EPDM / EPDM
- **G** PTFE-Neoprene / PTFE
- **H** Hytrel / Hytrel
- **I** EPDM / Santoprene
- **M** Santoprene / PTFE
- **N** Neoprene / Neoprene
- **T** PTFE-Buna-N / PTFE
- **V** FKM / FKM, Viton
- **L** FDA Santoprene / PTFE
- **S** PTFE-FDA Santoprene / PTFE

Check Valve Seat

- **1** Santoprene
- **4** Hytrel
- **A** Aluminum
- **B** Buna-N
- **E** EPDM
- **K** PVDF
- **N** Neoprene
- **P** PP
- **S** Stainless Steel
- **T** PTFE
- **V** FKM, Viton
- **W** UHMW PE

Porting Options

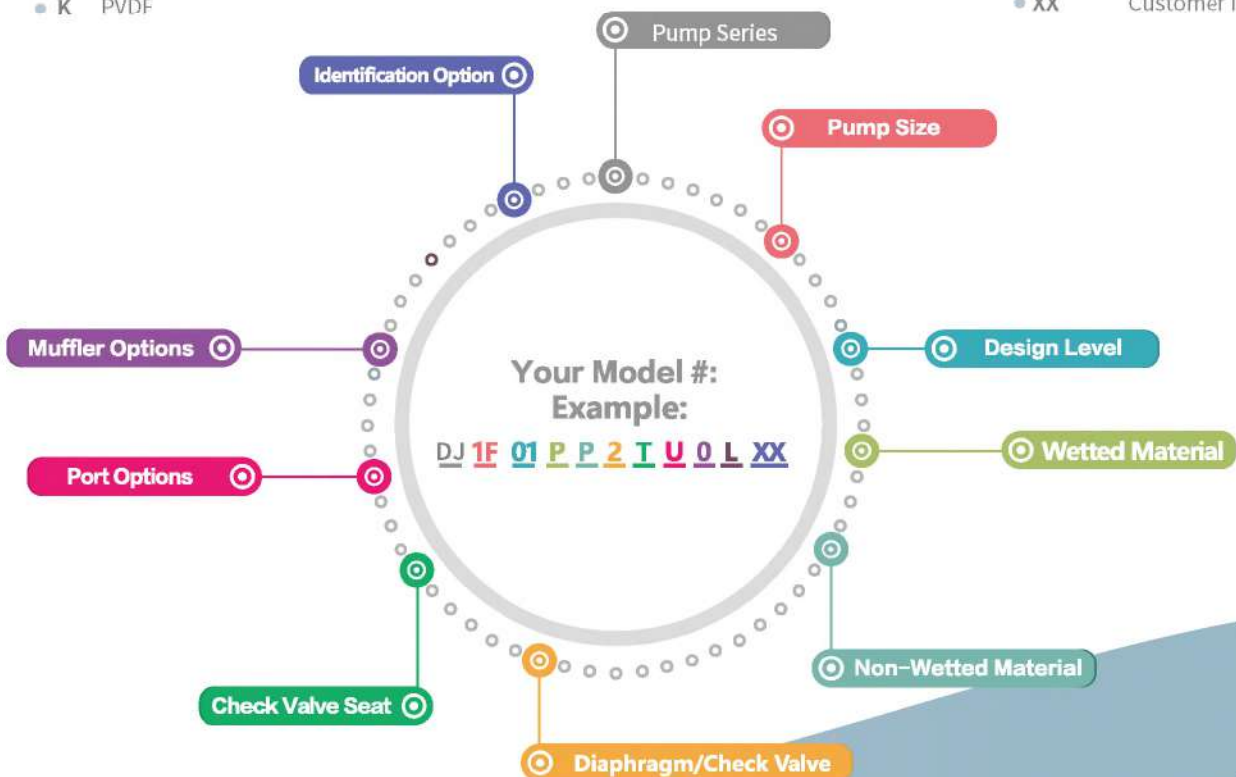
- **N** NPT Threads
- **B** BSPT Threads
- **A** ANSI Flange
- **D** DIN Flange
- **U** Universal Flange (Fits ANSI & DIN)
- **T** Sanitary Clamp Fitting

Muffler Options

- **0** Body Connected Muffler
- **6** Metal Muffler
- **X** No Muffler

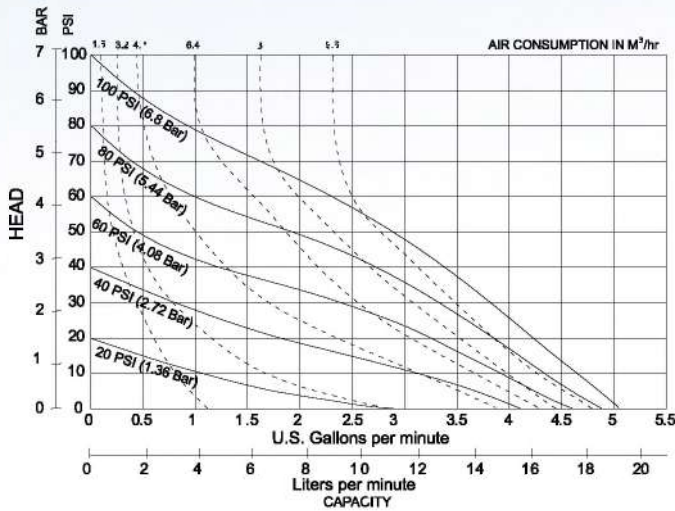
Identification Option

- **XX** Customer ID



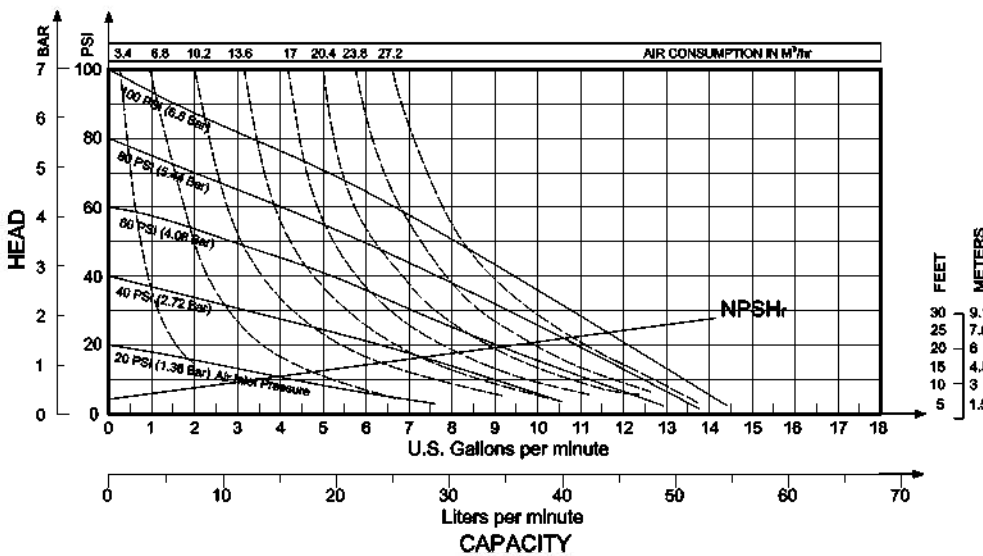
DJ Pump Non-metallic Model DJ-S Series

1/4" DJ02,T Non-metallic Pump Performance



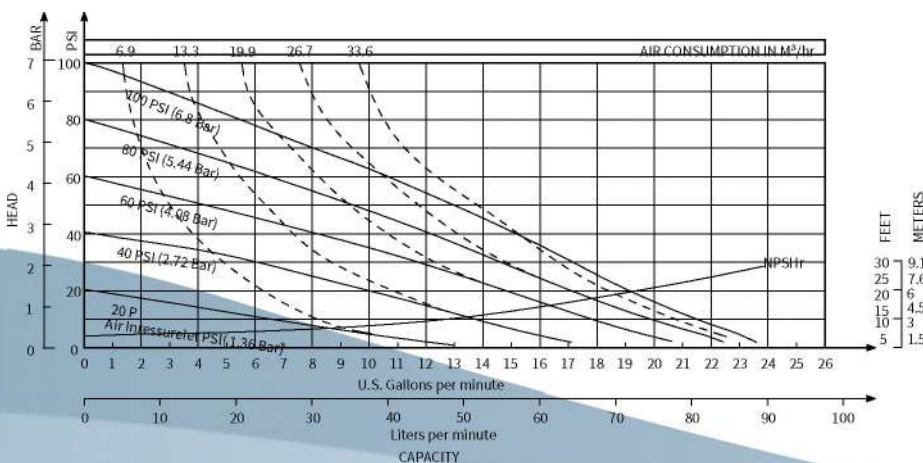
Max Flow (lpm/gpm)	19 / 5
Porting	NPT / BSP
Max Pressure	100/ 7
Max Solids (mm)	1
Wetted End	PP / PVDF

1/2" (12mm) DJ05 Non-metallic Pump Performance



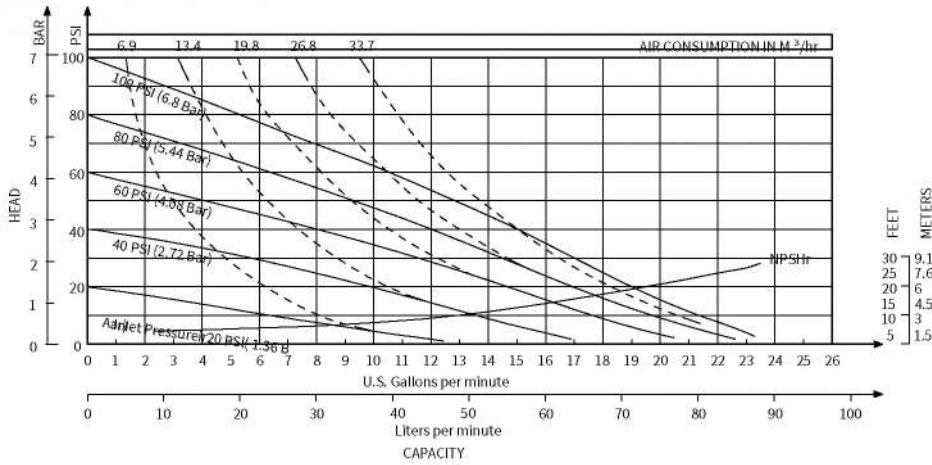
Max Flow (lpm/gpm)	56 / 15
Porting	NPT / BSP
Max Pressure	102/ 7
Max Solids (mm)	3
Wetted End	PP / PVDF
Suction Lift (m)	4.12 (Dry) 7.62 (Wet)

3/4" DJ07 Non-metallic Pump Performance



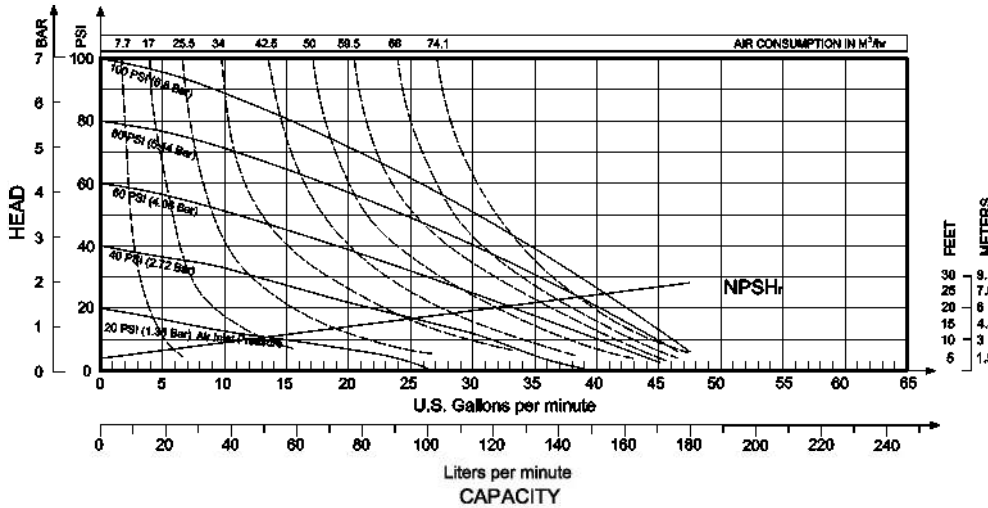
Max Flow (lpm/gpm)	90 / 24
Porting	NPT / BSP
Max Pressure	100/ 7
Max Solids (mm)	3
Wetted End	PP / PVDF
Suction Lift (m)	4.12 (Dry) 7.62 (Wet)

1" DJ10(A) Non-metallic Pump Performance



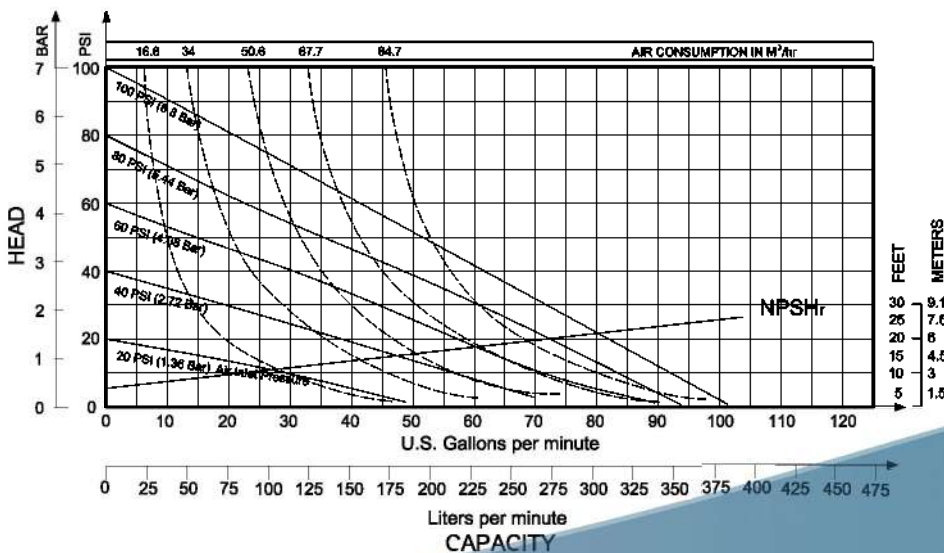
Max Flow (lpm/gpm)	90 / 24
Porting	ANSI
Max Pressure	100 / 7
Max Solids (mm)	3
Wetted End	PP / PVDF
Suction Lift (m)	4.12 (Dry) 7.62 (Wet)

1" (25mm) DJ1F Non-metallic Pump Performance



Max Flow (lpm/gpm)	204 / 54
Porting	Flange
Max Pressure	102 / 7
Max Solids (mm)	6
Wetted End	PP / PVDF
Suction Lift (m)	4.57 (Dry) 7.62 (Wet)

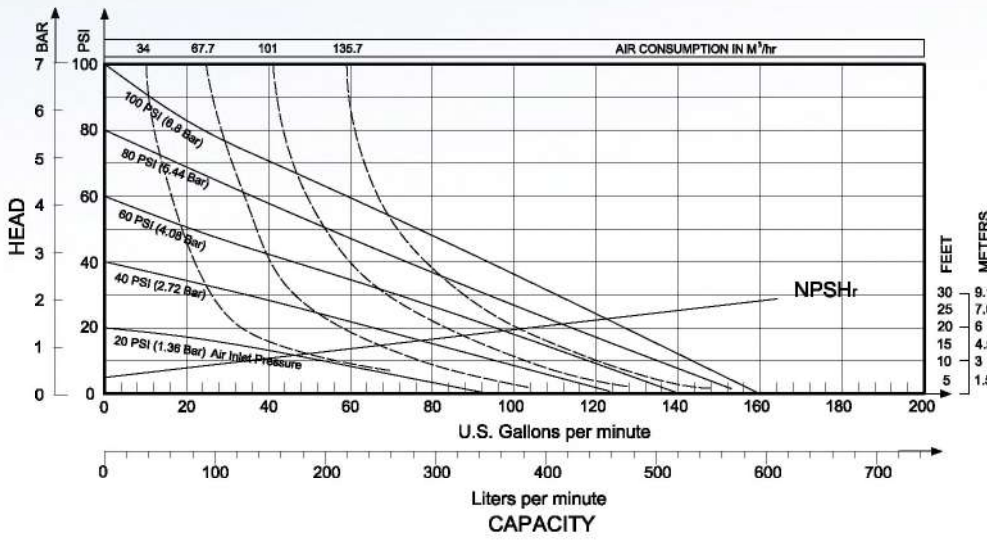
1 1/2" (38mm) DJ15 Non-metallic Pump Performance



Max Flow (lpm/gpm)	382 / 101
Porting	Flange
Max Pressure	102 / 7
Max Solids (mm)	12
Wetted End	PP / PVDF
Suction Lift (m)	4.4 (Dry) 7.62 (Wet)

DJ Pump Non-metallic Model DJ-S Series

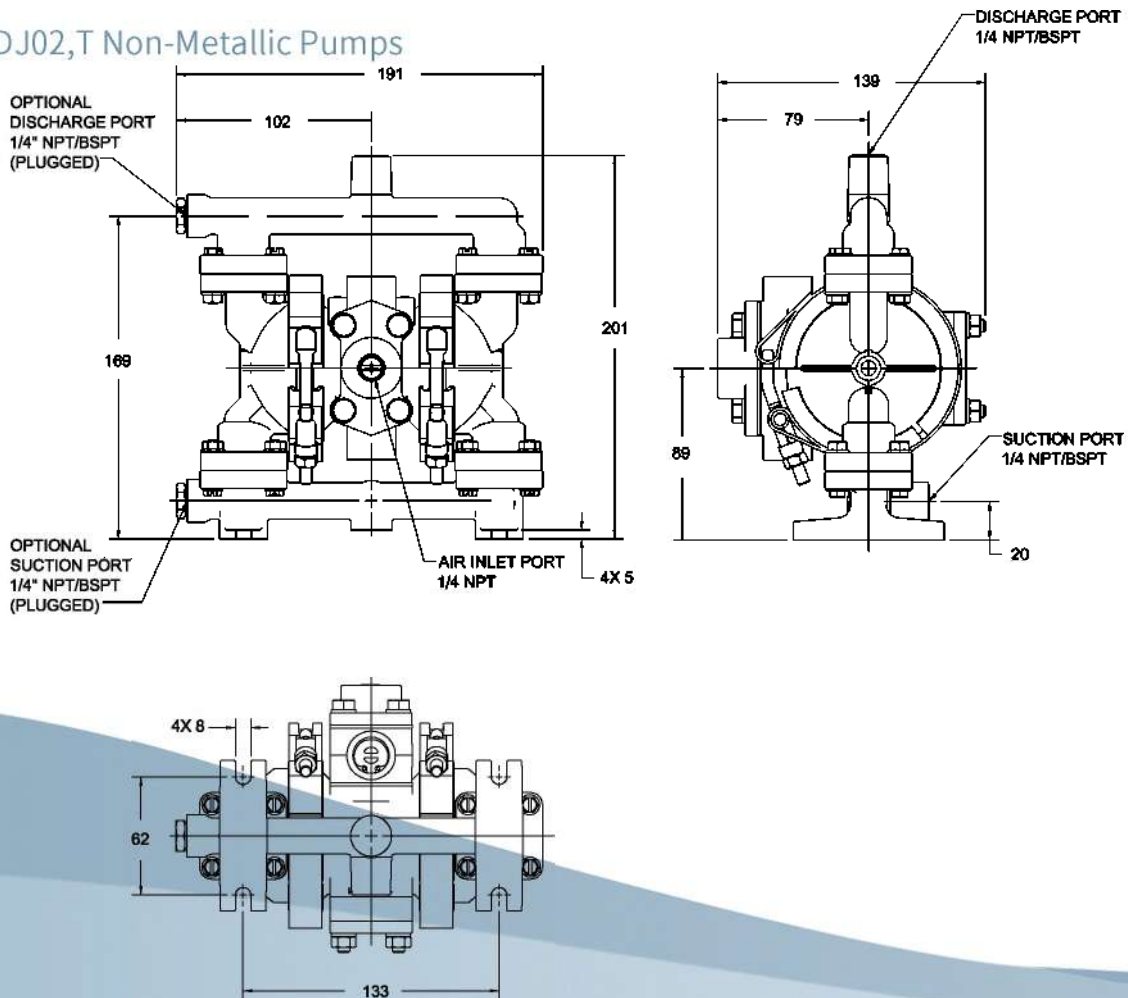
2" (50mm) DJ20 Non-metallic Pump Performance



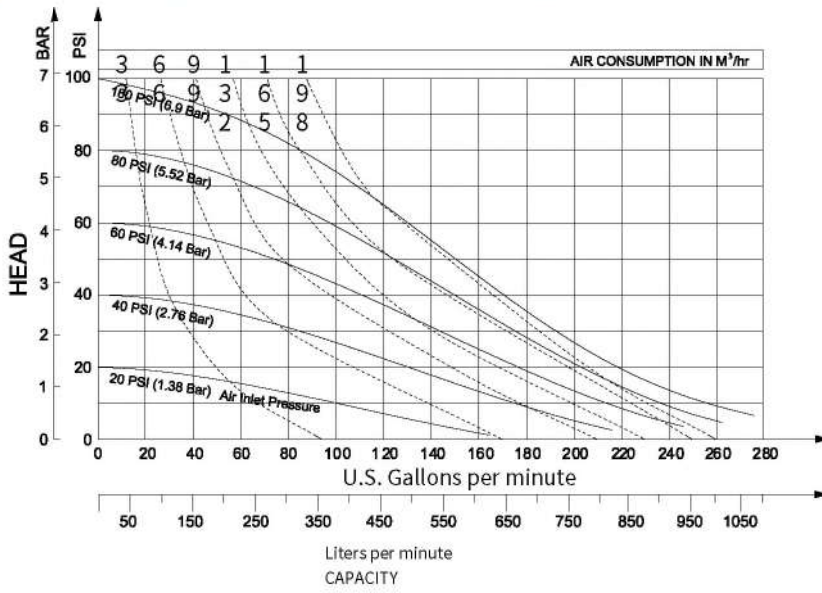
Max Flow (lpm/gpm)	609 / 161
Porting	Flange
Max Pressure	102/ 7
Max Solids (mm)	17
Wetted End	PP / PVDF
Suction Lift (m)	6.5 (Dry) 7.62 (Wet)

Pump Dimension Drawing Non-metallic DJ-S Series

DJ02,T Non-Metallic Pumps

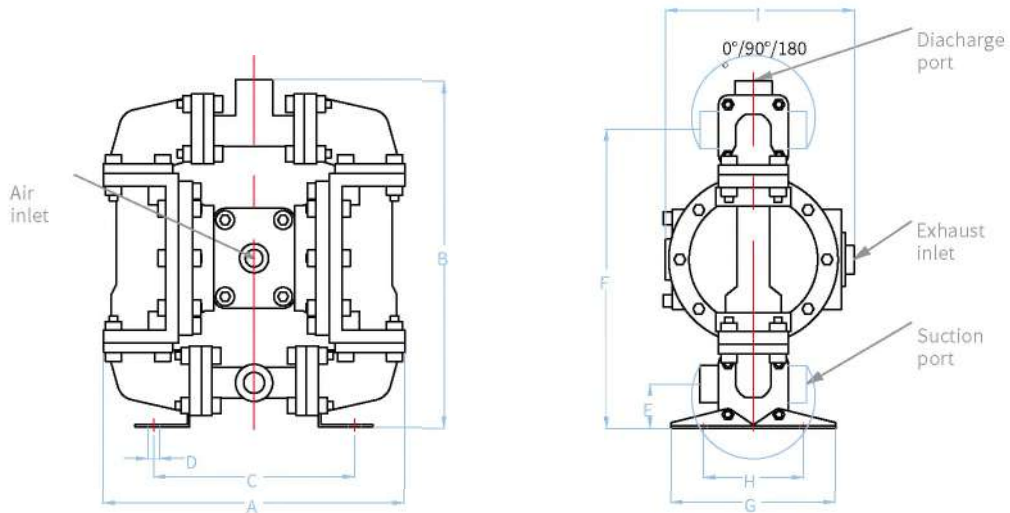


3" (80mm) DJ05 Non-metallic Pump Performance



Max Flow (lpm/gpm)	1064 / 281
Porting	Flange
Max Pressure	100/ 7
Max Solids (mm)	19
Wetted End	PP / PVDF

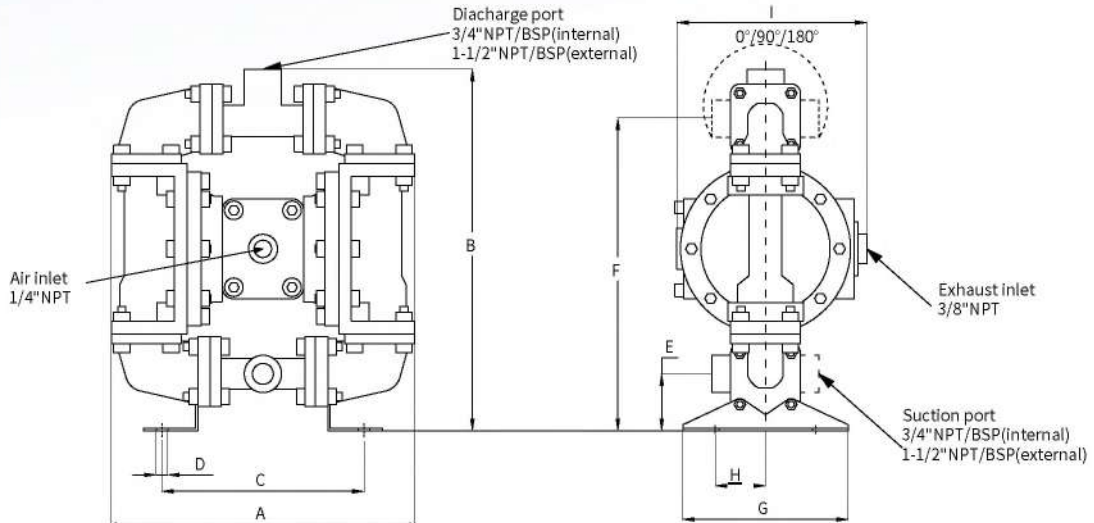
DJ05 Non-Metallic Pumps



Pump Model	Port Size		Air Inlet Size	Exhaust Port Size	A	B	C	D	E	F	G	H	I		Weight (lb)	
	inches				mm	mm	mm	mm	mm	mm	mm	mm	mm	mm		mm
					inches	inches	inches	inches	inches	inches	inches	inches	inches	inches		inches
DJ05NM	1/2" NPT/BSP(internal)	inches	1/4" NPT	3/8" NPT	257	293	166	9	36	250	142	92	181	224	PP:11.2 PVDF:13	
	1" NPT/BSP(external)				10.1"	11.5"	6.6"	0.36"	1.4"	9.8"	5.6"	3.6"	7.1"	8.8"		

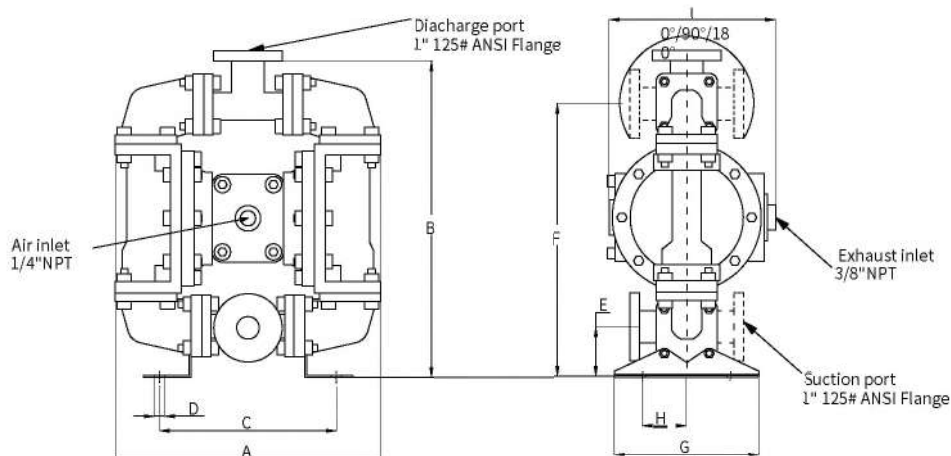
Pump Dimension Drawing DJ-S Series

DJ07 Non-Metallic Pumps



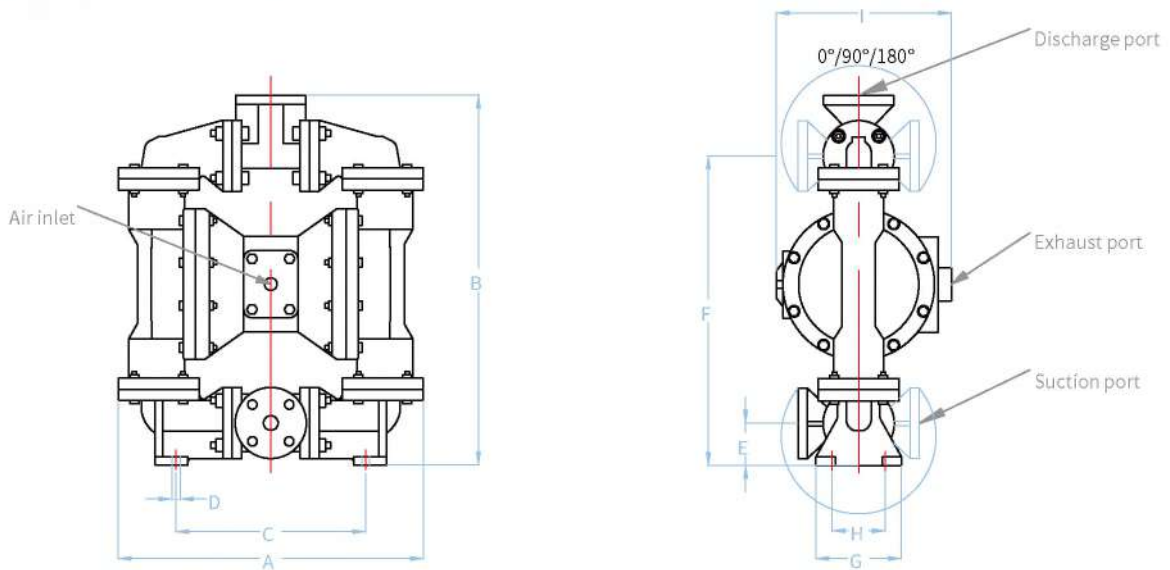
Pump Model	A	B	C	D	E	F	G	H	I mm/inches		Weight (kg)
									standard muffler	metal muffler	
									mm inches	mm inches	
DJ07NM	300 11.81"	357 14.06"	184 7.24"	9 0.36"	64 2.52"	297 11.69"	143 5.63"	57 2.24"	179 7.05"	222 8.74"	PP:6.2 PVDF:8

DJ10(A) Non-Metallic Pumps



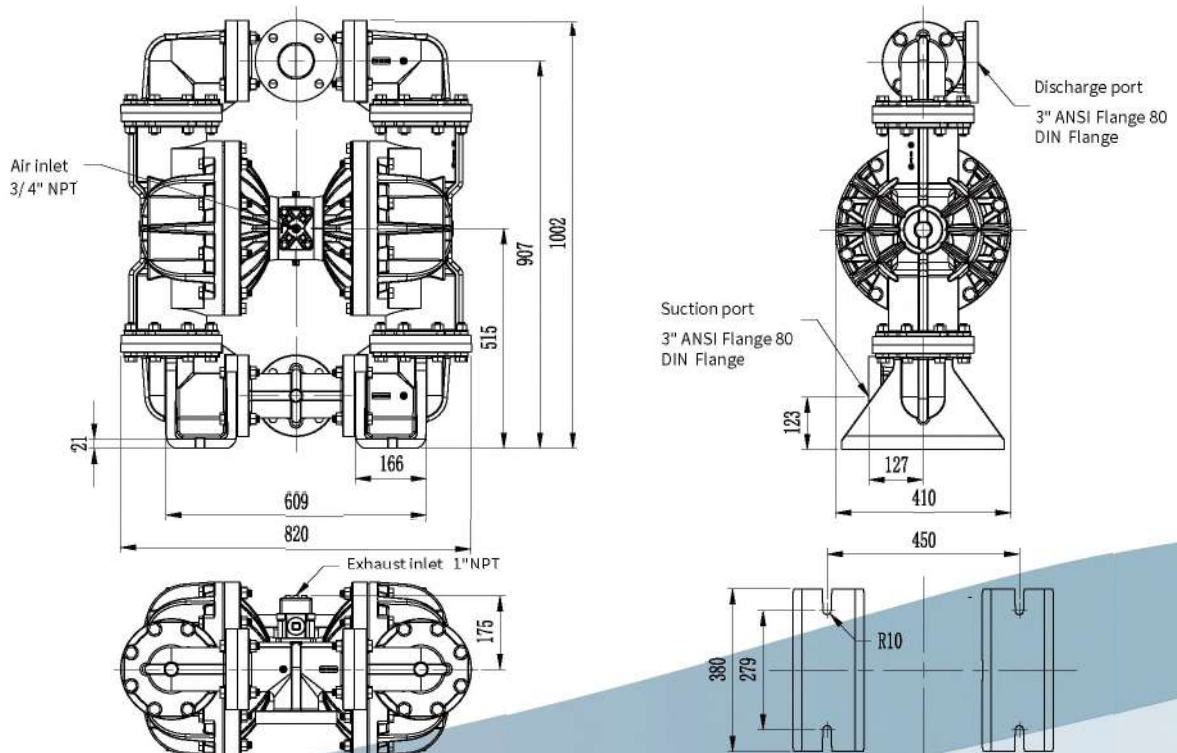
Pump Model	A	B	C	D	E	F	G	H	I mm/inches		Weight (kg)
									standard muffler	metal muffler	
									mm inches	mm inches	
DJ10 NM	300 11.81"	386 15.2"	184 7.24"	9 0.36"	64 2.52"	297 11.69"	143 5.63"	57 2.24"	179 7.05"	222 8.74"	PP:6.3 PVDF:8.1

DJ1F,DJ15,DJ20 Non-Metallic Pumps



Pump Model	Port Size	Air Inlet Size	Exhaust Port Size	A	B	C	D	E	F	G	H	I		Weight (lb)
				mm inches	mm inches	mm inches	mm inches	mm inches	mm inches	mm inches	mm inches	mm inches	standard muffler	
DJ1FNM	1"150#Flange	1/2"NPT	1"NPT	433 17"	527 20.75"	259 10.2"	11 0.44"	63 2.5"	433 17"	130 5.1"	112 4"	300 11.8"	343 13.5"	PP:40.6 PVDF:49.8
DJ15NM	1.5"150#Flange	3/4"NPT	1"NPT	584 23"	730 28.75"	287 11.3"	16 0.63"	89 3.5"	640 25.2"	228 9"	172 6.8"	330 13"	384 15.1"	PP:87.1
DJ20NM	2"150#Flange	3/4"NPT	1"NPT	605 23.8"	819 32.25"	289 11.4"	16 0.63"	97 3.8"	716 28.2"	292 11.5"	236 9.2"	330 13"	384 15.1"	PP:92.6

DJ130 Non-Metallic Pumps



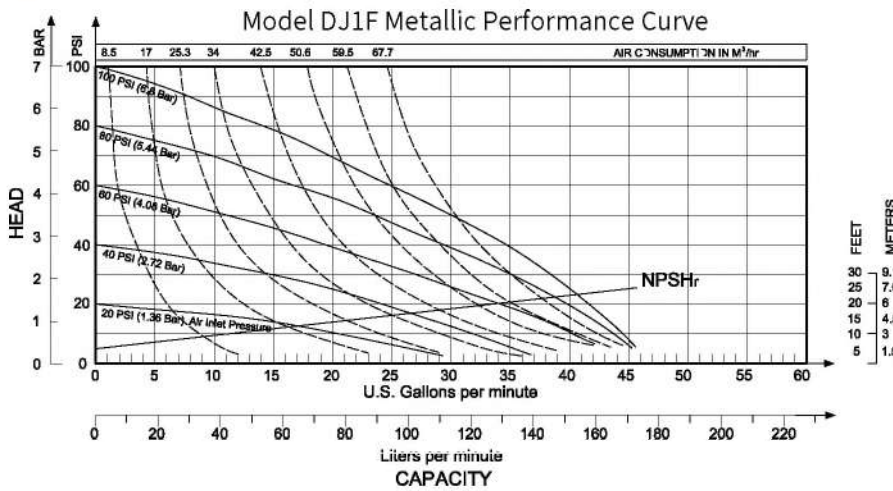
DJ Pump Metallic Model DJ-S Series

1/2" (12mm) DJ05 Metallic Pump Performance



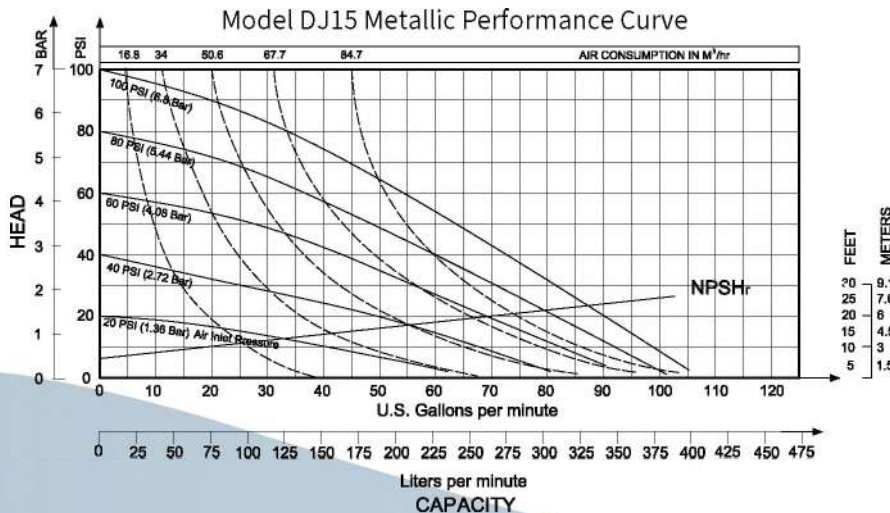
Max Flow (lpm/gpm)	60 / 16
Porting	NPT / BSP
Max Pressure	125 / 8.6
Max Solids (mm)	3
Wetted End	Cast Iron/Aluminum/ Stainless Steel
Suction Lift (m)	4.15 (Dry) 7.62 (Wet)

1" (25mm) DJ1F Metallic Pump Performance



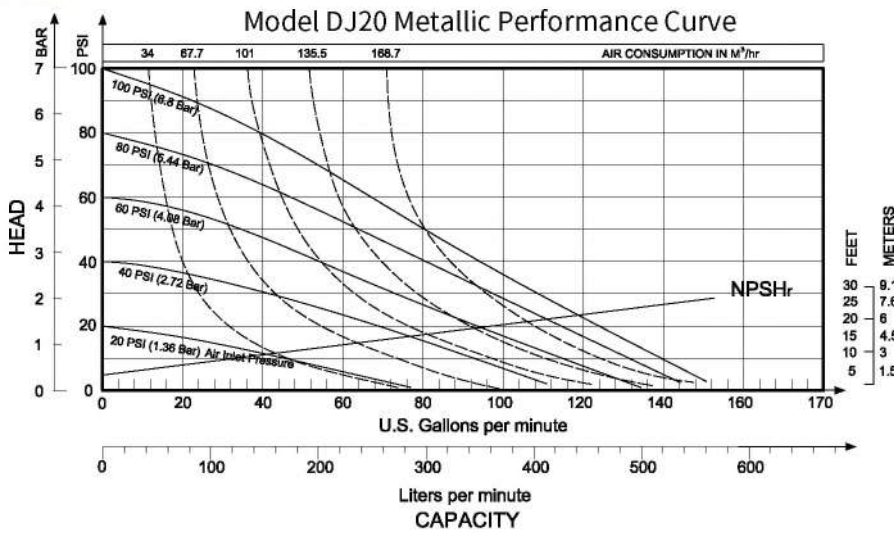
Max Flow (lpm/gpm)	174 / 46
Porting	NPT / BSP
Max Pressure	125 / 8.6
Max Solids (mm)	6
Wetted End	Cast Iron/Aluminum/ Stainless Steel
Suction Lift (m)	4.57 (Dry) 7.62 (Wet)

1 1/2" (38mm) DJ15 Metallic Pump Performance



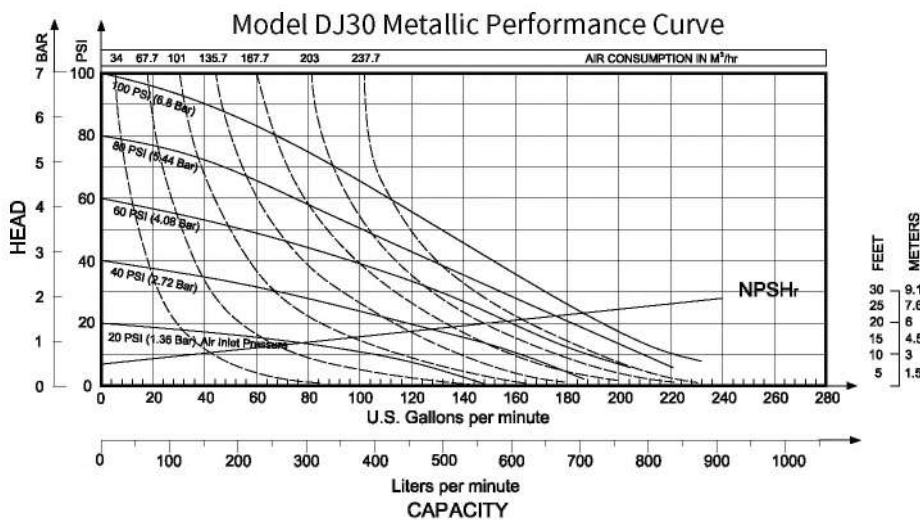
Max Flow (lpm/gpm)	405 / 107
Porting	NPT / BSP
Max Pressure	125 / 8.6
Max Solids (mm)	6
Wetted End	Cast Iron/Aluminum/ Stainless Steel
Suction Lift (m)	5.3 (Dry) 7.62 (Wet)

2" (50mm) DJ20 Metallic Pump Performance



Max Flow (lpm/gpm)	571 / 151
Porting	NPT / BSP
Max Pressure	125 / 8.6
Max Solids (mm)	6
Wetted End	Cast Iron/Aluminum/ Stainless Steel
Suction Lift (m)	6.1 (Dry) 7.62 (Wet)

3" (75mm) DJ30 Metallic Pump Performance

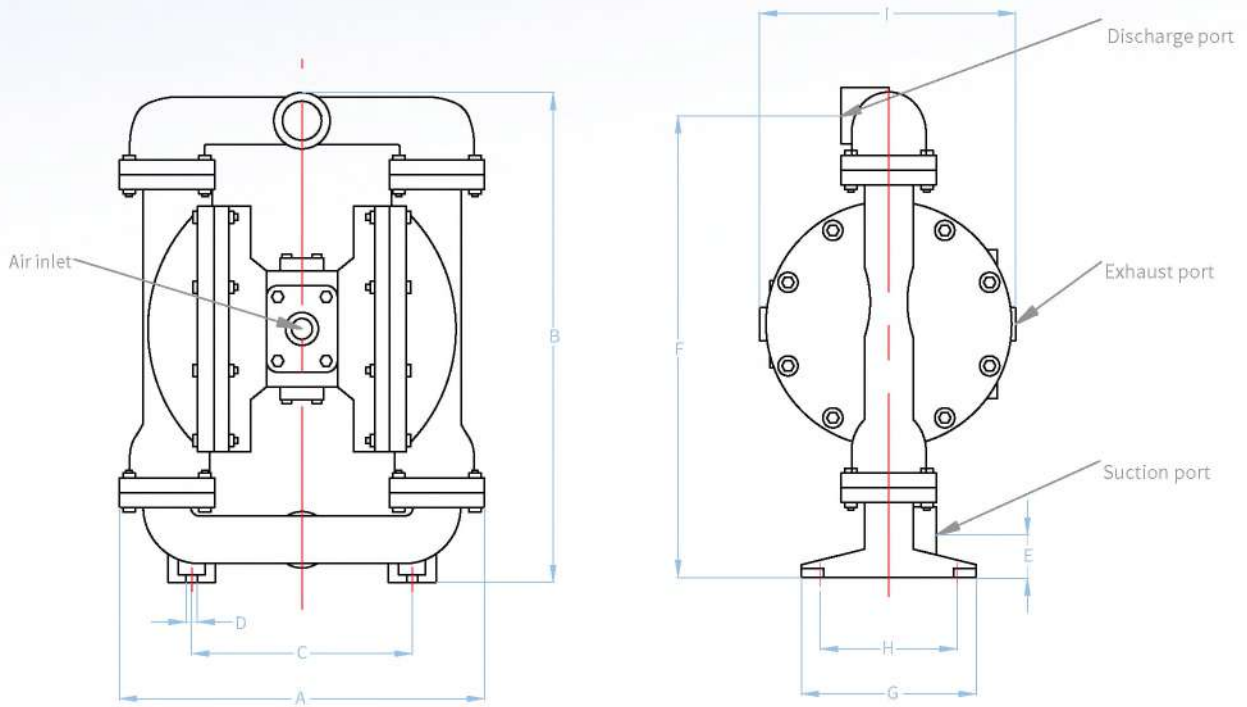


Max Flow (lpm/gpm)	893 / 236
Porting	NPT / BSP
Max Pressure	125 / 8.6
Max Solids (mm)	9.6
Wetted End	Cast Iron/Aluminum/ Stainless Steel
Suction Lift (m)	6.2 (Dry) 7.62 (Wet)

Flexible Design According to Customer Needs

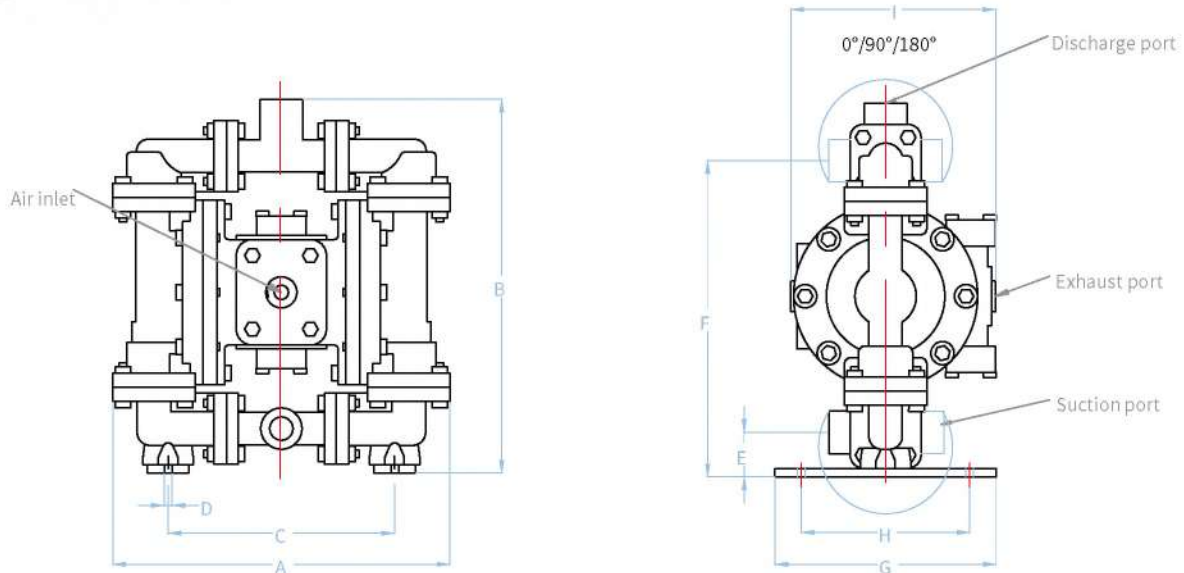


DJ05,DJ1F,DJ15,DJ30 Metallic Pumps



Pump Model		DJ05M	DJ1FM	DJ15M	DJ20M	DJ30M	
Port Size		1/2" NPT/ BSP(internal) 1"NPT/ BSP(external)	1"NPT/BSP	1.5"NPT/BSP	2"NPT/BSP	3"NPT/BSP	
Air Inlet Size		1/4"NPT	1/2"NPT	3/4"NPT	3/4"NPT	3/4"NPT	
Exhaust Port Size		3/8"NPT	1"NPT	1"NPT	1"NPT	1"NPT	
A	mm	260	260	423	428	499	
	inches	10.2	10.2"	16.7"	16.9"	19.6"	
B	mm	263	326	559	669	815	
	inches	10.4	12.8"	22"	26.3"	32.1"	
C	mm	183	172	251	256	305	
	inches	7.2	6.8"	9.9"	10.1"	12"	
D	mm	10	8	13	13	17	
	inches	0.4"	0.32"	0.5"	0.5"	0.66"	
E	mm	33	31	54	51	60	
	inches	1.3	1.2"	2.1"	2"	2.4"	
F	mm	247	304	526	631	761	
	inches	9.7	12.0"	20.7"	24.8"	30.0"	
G	mm	156	127	203	254	298	
	inches	6.1	5"	8"	10"	11.7"	
H	mm	140	96	178	228	258	
	inches	5.52"	3.8"	7.0"	9.0"	10.2"	
I	standard muffler	mm	186	264	314	320	400
	inches	7.3	10.4"	12.4"	12.6"	15.75"	
	metal muffler	mm	219	319	368	373	425
	inches	8.6	12.6"	14.5"	14.7"	16.75"	
Weight (lb)		SS: 24.7	AL: 25.1 CI: 43.1 SS: 40.6	AL: 60.4 CI: 105.8 SS: 103.6	AL: 70.5 CI: 134.4 SS: 123.5	AL: 121.3 CI: 224.9 SS: 216.1	

DJ05AL Metallic Pumps



Pump Model	Port Size	Air Inlet Size	Exhaust Port Size	A	B	C	D	E	F	G	H	I		Weight (lb)
	inches	inches	inches	mm inches	mm inches	mm inches	mm inches	mm inches	mm inches	mm inches	mm inches	standard muffler	metal muffler	
												mm inches	mm inches	
DJ05AL	1/2" NPT/BSP(internal) 1" NPT/BSP(external)	1/4" NPT	3/8" NPT	260 10.25"	292 11.5"	184 7.3"	8 0.3"	34 1.3"	247 9.7"	172 6.75"	140 5.5"	186 7.3"	219 8.6"	17.6

Chemical Chart of Materials

Material Name	Working Temperature Limited F(°C)	Level 1~5 (Level 5 is the best)		
		Chemical Resistance	Wear Resistance	Flexibility
Buna-N	-10(-23) ~190(88)	1	2	3
PTFE-Diaphragm	-35(-37) ~ 220(104)	5	2	-
EPDM	-40 (-40) ~280 (138)	4	4	4
Viton	-40 (-40) ~350 (177)	4	2	1
Neoprene	-10 (-23) ~200 (93)	1	3	3
PP	+35 (2) ~175 (79)	4	2	-
Santoprene	-40 (-40) ~275 (135)	4	5	5
PVDF	+10 (-12) ~200(93)	5	2	-
TPO	-40(-40)~239(115)	4	5	3

DJ Pump Professional Industry Model

Pumps For Lithium Batteries

- Applicable to the lithium battery industry
- Does not contain iron, copper, zinc
- Sizes: plastic pump 1/4"~2" metal pump 1/2"~3"
- Meet the relevant standards of the lithium battery industry
- Certificates: CE, ATEX



Pumps For Mining

- Aluminum shell
- Pumps of 1.5 inches and above are designed and equipped with handles for easy transportation. Customers can choose the protective cover according to their needs to adapt to the coal mine environment.
- Sizes: 1/2", 1", 1-1/2", 2", 3"
- Possess a mining product safety mark certificate
- Certificates: CE, ATEX, MA



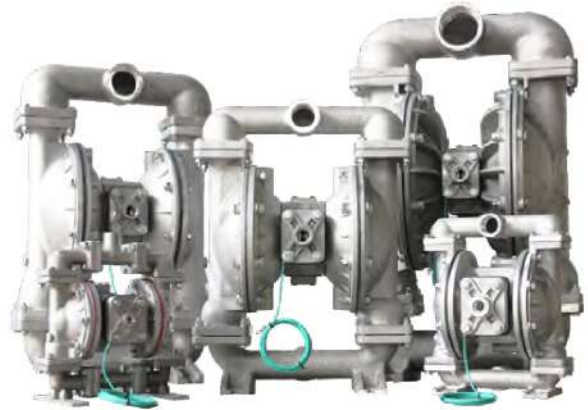
Pumps For Food Hygienic

- Applicable to the sanitary industry
- Food grade quick connection interface, no thread connection, better meet the needs of the food industry
- The surface of the aluminum air system is coated with food-grade epoxy resin
- Certificates: CE, ATEX, DPTC



Gas Operated Pump

- Aluminum and Stainless Steel bodies
- The main air path seals are all made of fluorine rubber or conductive material
- Equipped with metal muffler and ground wire
- It is generally applicable to occasions where explosion-proof requirements are generally required. Especially suitable for occasions driven by natural gas
- Certificates: CE, ATEX



Dry Powder Transfer Pump

- Aluminum and Stainless Steel 316 bodies
- Bulk density: 800 kg/m³ max.
- Powder mesh size: 200 mesh min.
- Unique air intake system, spill-free and safe, reduce air contamination;
- Certificates: CE, ATEX

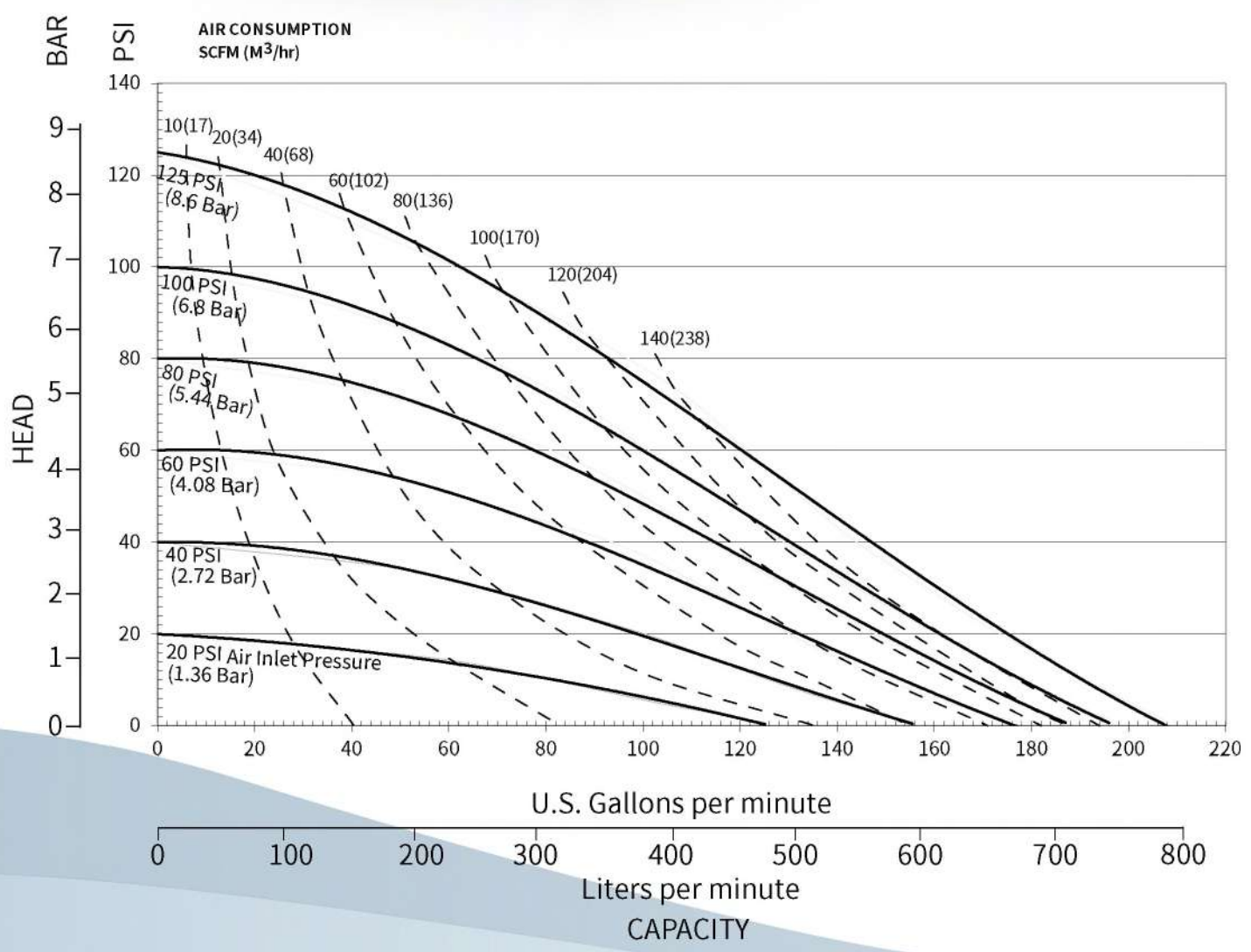


Full Stainless Steel Pump

- Full 316 Stainless Steel
- Suitable for working in corrosive gas environments
- 1", 2.5", 2", 3"
- Certificates: CE, ATEX



DJ Pump DJ-HDF20 Flap Valve 2"



SUCTION/DISCHARGE PORT SIZE

- 2" NPT (internal)
- 2" BSPT (internal)

CAPACITY

- 0 to 206 gallons per minute (0 to 780 liters per minute)

AIR DISTRIBUTION VALVE

- No-lube, no-stall design

SOLIDS-HANDLING

- Up to 1.8 in. (45mm)

HEADS UP TO

- 125 psi or 289 ft. of water (8.8 kg/cm² or 88 meters)

DISPLACEMENT/STROKE

- 0.47 Gallon / 1.8 liter

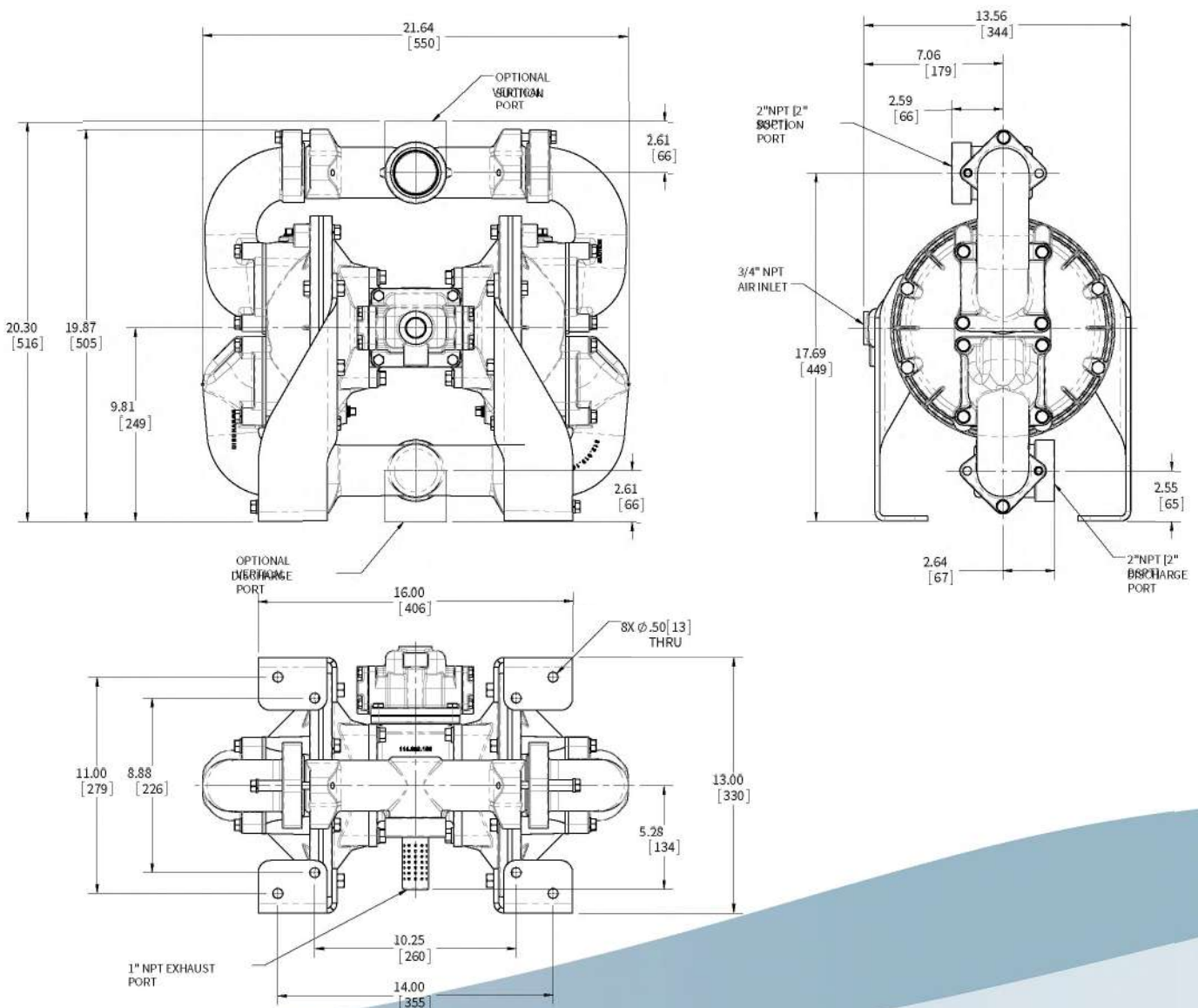
MAX OPERATING PRESSURE

- 125 psi (8.6 bar)

SHIPPING WEIGHT

- Aluminum 88 lbs. (39.9kg)

Dimension Tolerance : ±5mm or ±0.2"



DJ Pump DJ-HDF30&40 Flap Valve 3" 4"



SUCTION/DISCHARGE PORT SIZE

- 3" ANSI Flange
- 4" ANSI Flange

CAPACITY

- 0 to 311 gallons per minute (0 to 1176 liters per minute)

AIR DISTRIBUTION VALVE

- No-lube, no-stall design

SOLIDS-HANDLING

- Up to 3 in. (75mm)

HEADS UP TO

- 125 psi or 289 ft. of water (8.8 kg/cm² or 88 meters)

DISPLACEMENT/STROKE

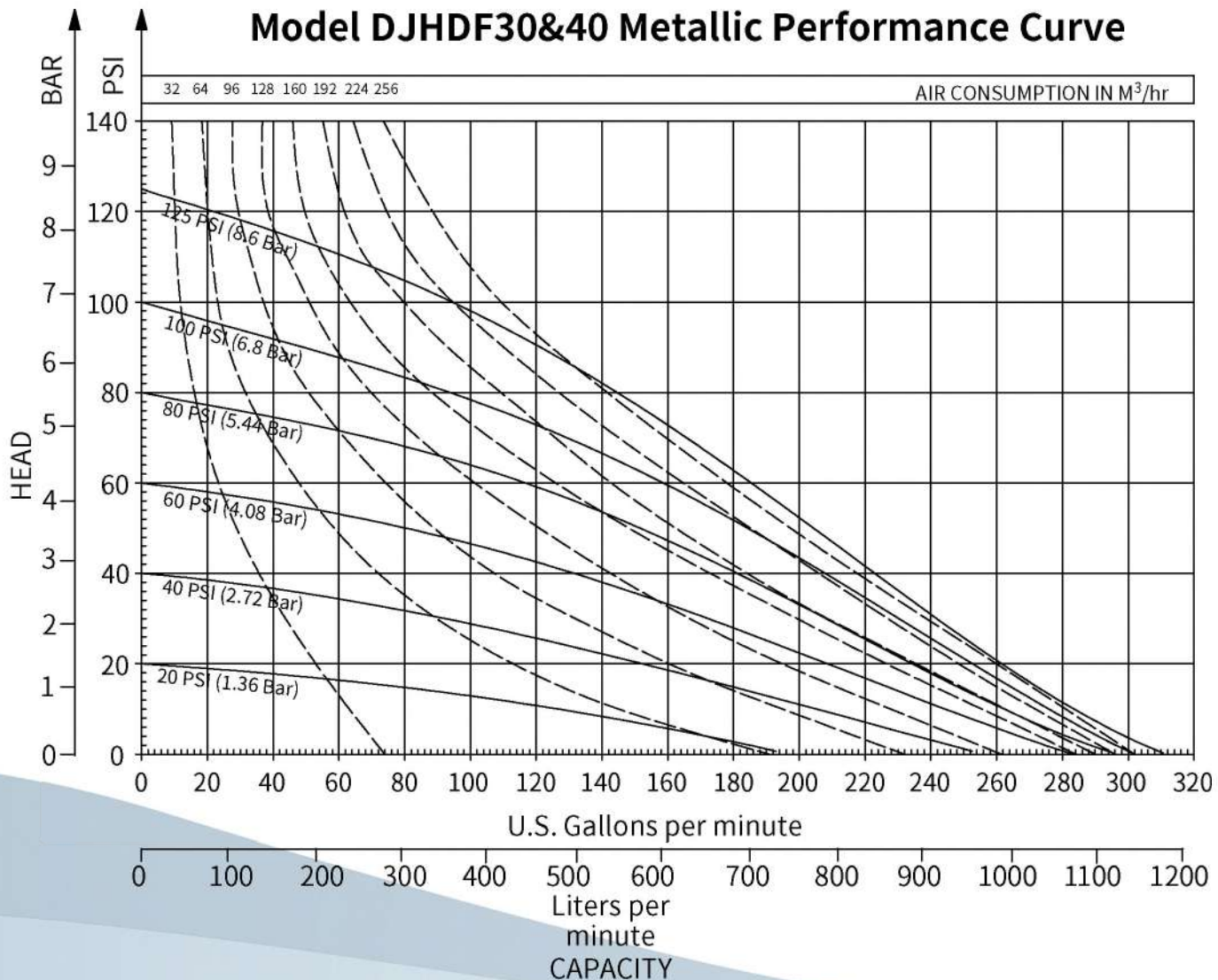
- 1.6 Gallon / 6.08 liter

MAX OPERATING PRESSURE

- 125 psi (8.6 bar)

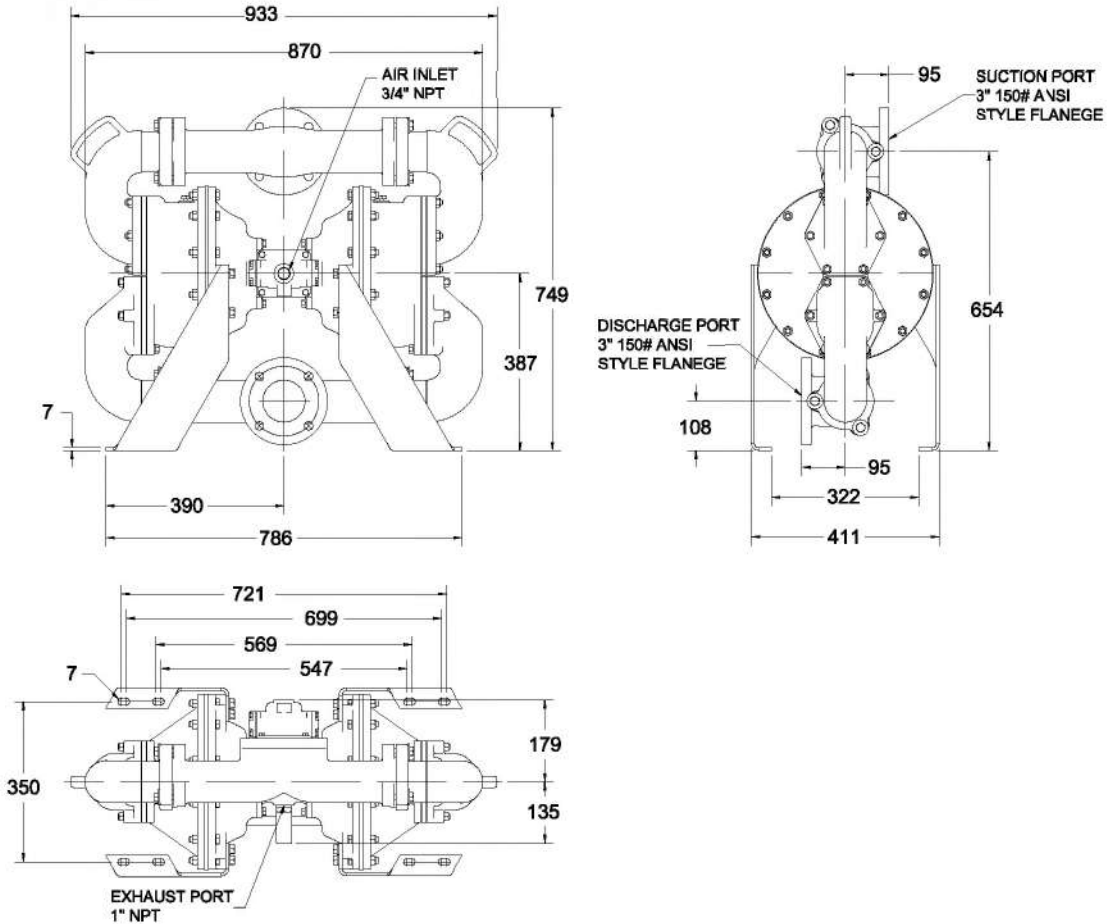
SHIPPING WEIGHT

- Aluminum 335 lbs. (152kg)- HDF30
- Aluminum 408 lbs. (185kg)- HDF40

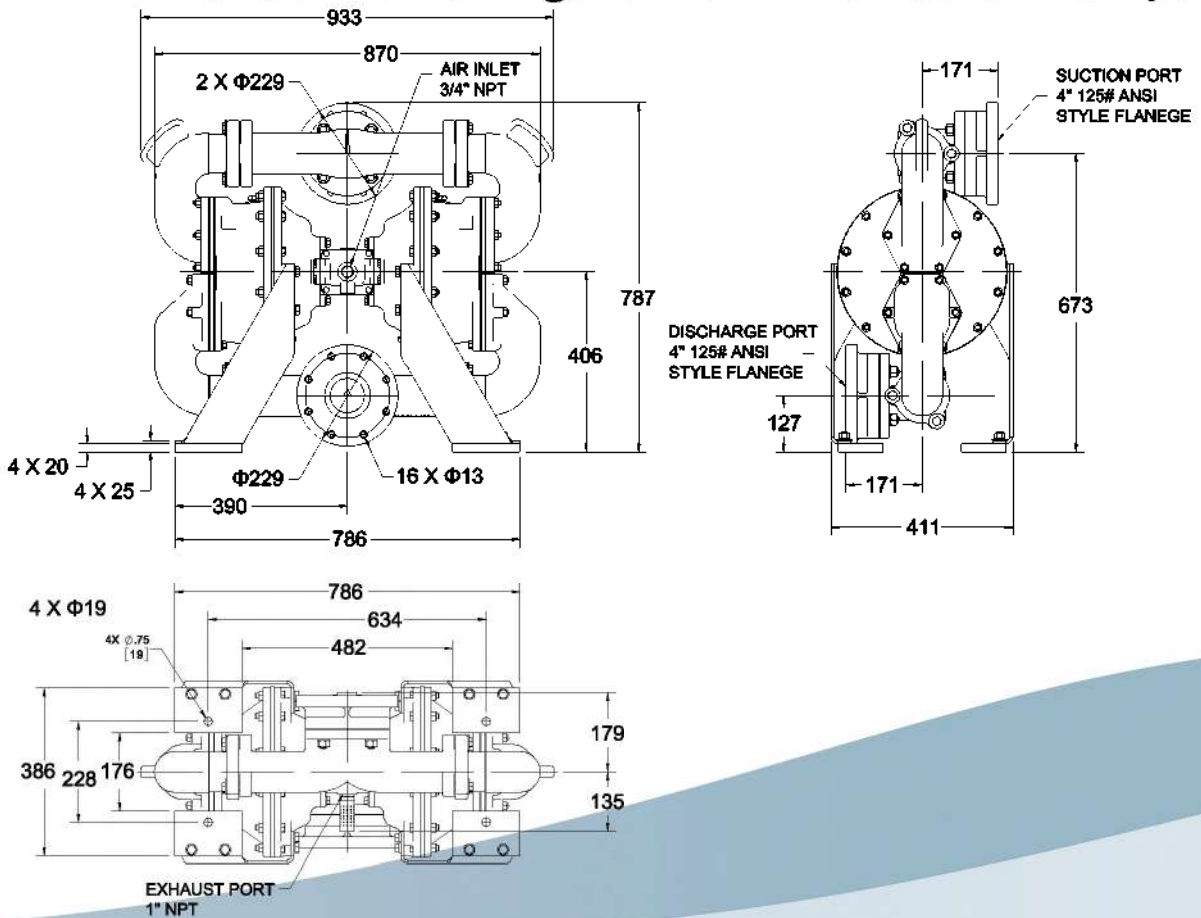


Dimension Tolerance : $\pm 5\text{mm}$

Dimensional Drawings for DJHDF30 Metallic Pumps



Dimensional Drawings for DJHDF40 Metallic Pumps



DJ Pump DJ-HDB 1F Metallic



SUCTION/DISCHARGE PORT SIZE

- 1" NPT (internal)
- 1" BSPT (internal)

HEADS UP TO

- 125 psi or 289 ft. of water
(8.8 kg /c m² or 88 meters)

CAPACITY

- 0 to 43 gallons per minute
- (0 to 162 liters per minute)

DISPLACEMENT/STROKE

- 0.09 Gallon / 0.34 liter

AIR DISTRIBUTION VALVE

- No-lube, no-stall design

MAX OPERATING PRESSURE

- 125 psi (8.6 bar)

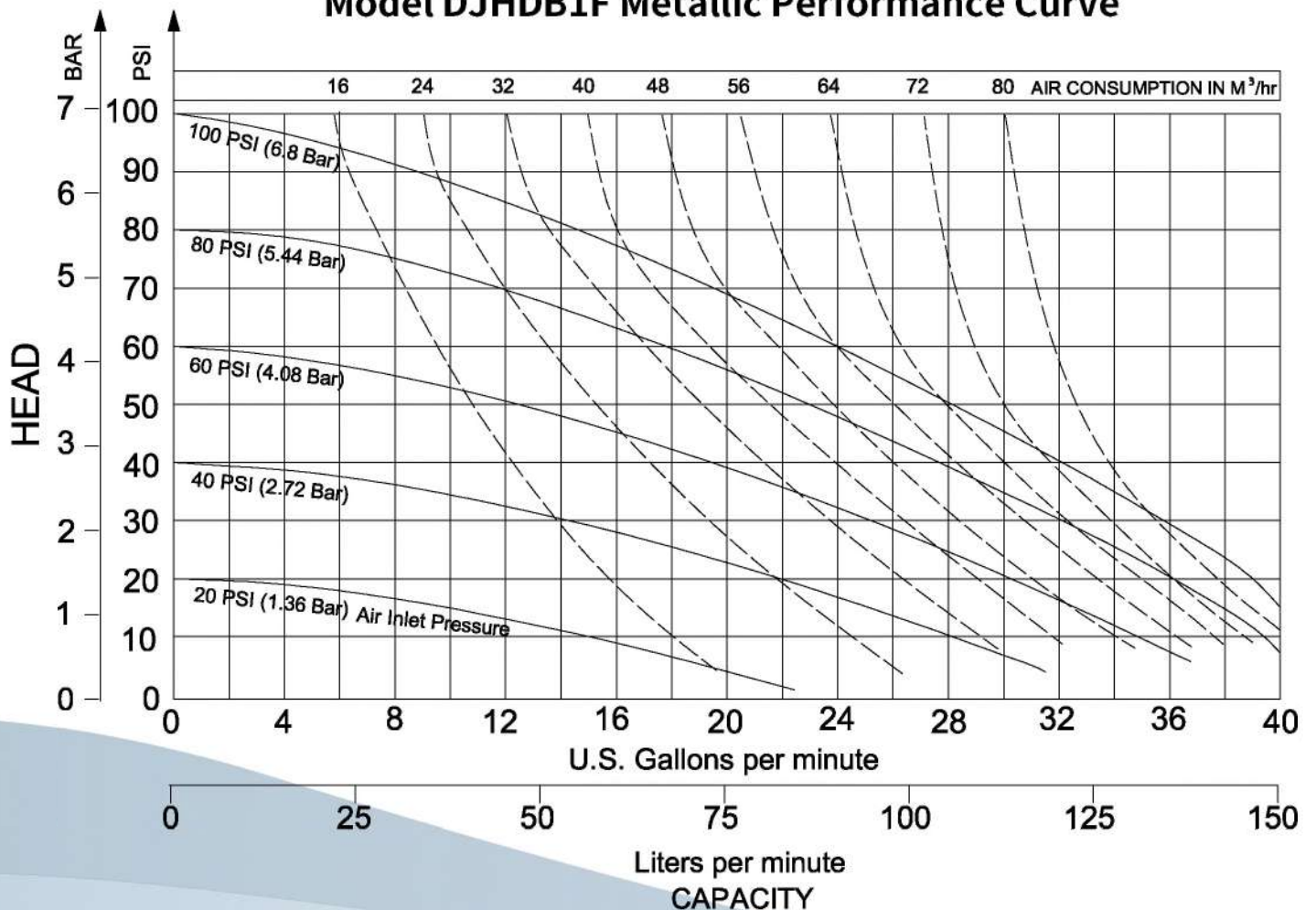
SOLIDS-HANDLING

- Up to 0.25 in. (6.3mm)

SHIPPING WEIGHT

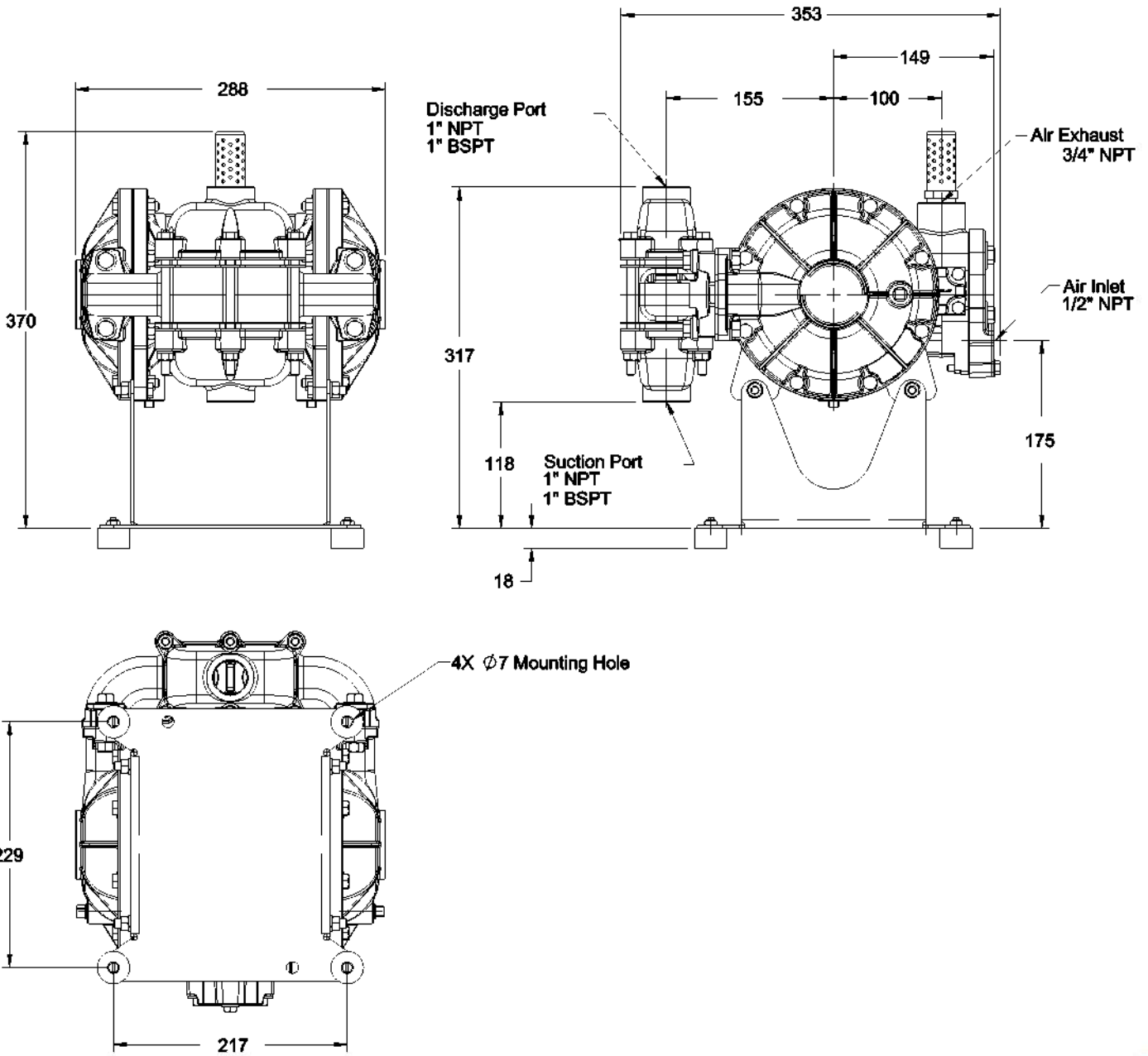
- Stainless Steel 20kg

Model DJHDB1F Metallic Performance Curve



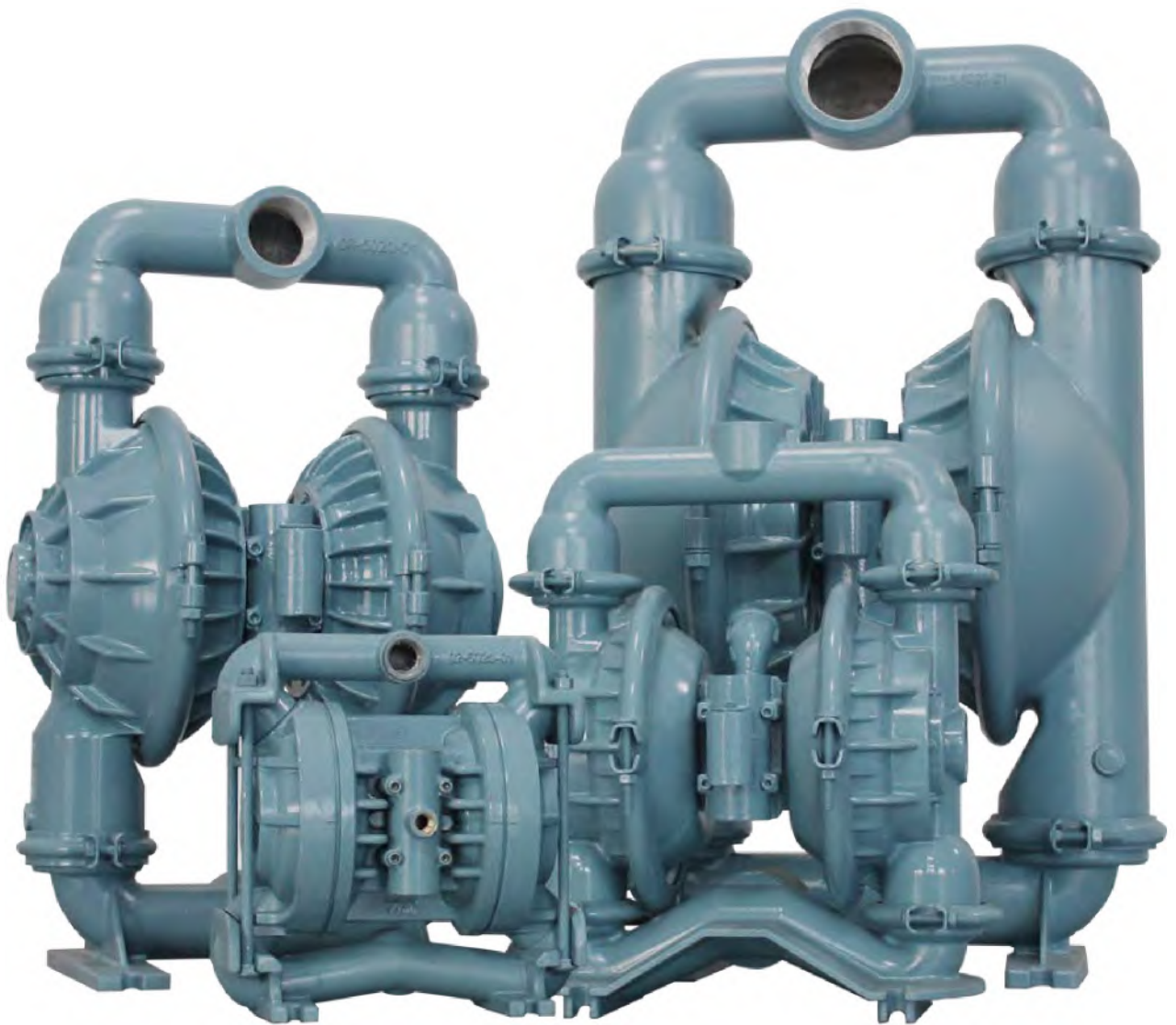
Dimensional Drawings

Dimension Tolerance : $\pm 5\text{mm}$



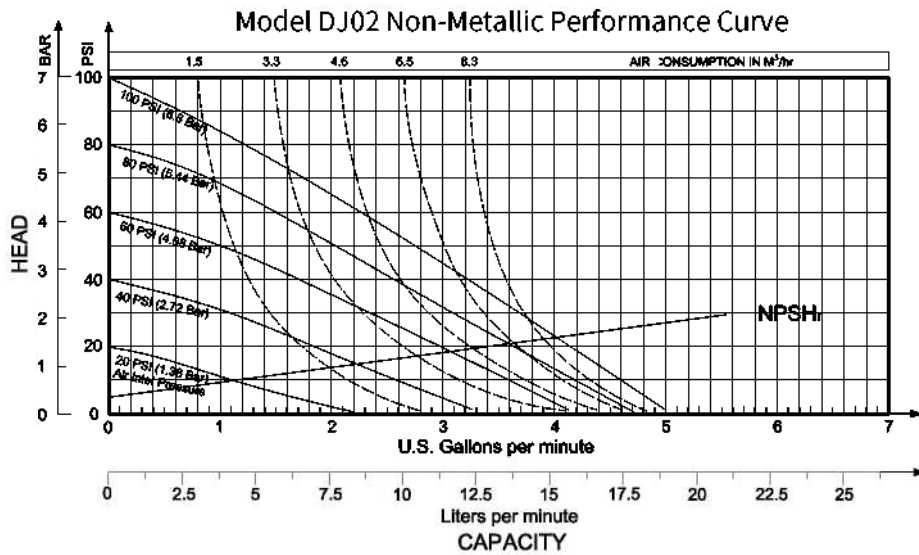
2. DJ-T Series

The Pumps Compatible with Wilden

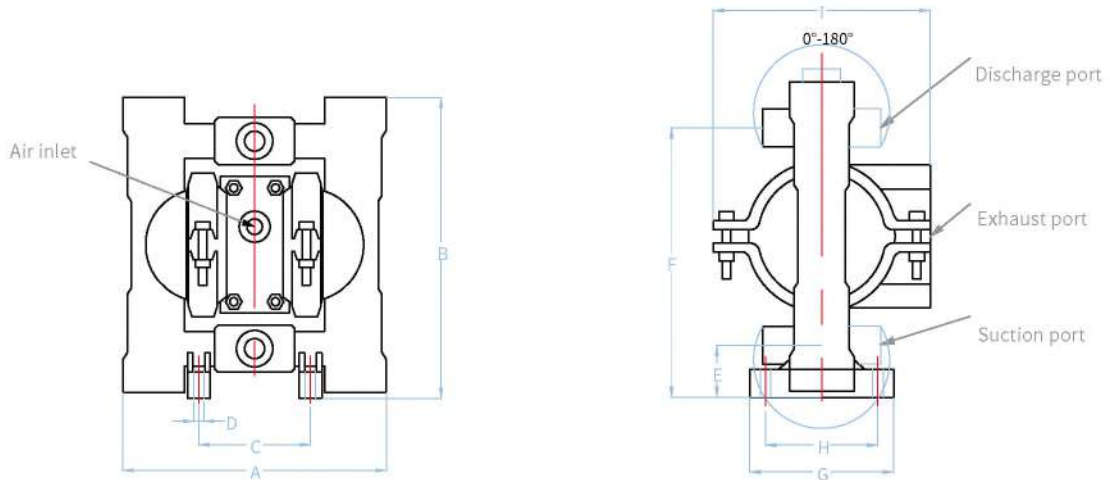


DJ Pump Non-metallic DJP.025 Model

1/4" (6mm) DJ02 P.025 Non-metallic Pump Performance



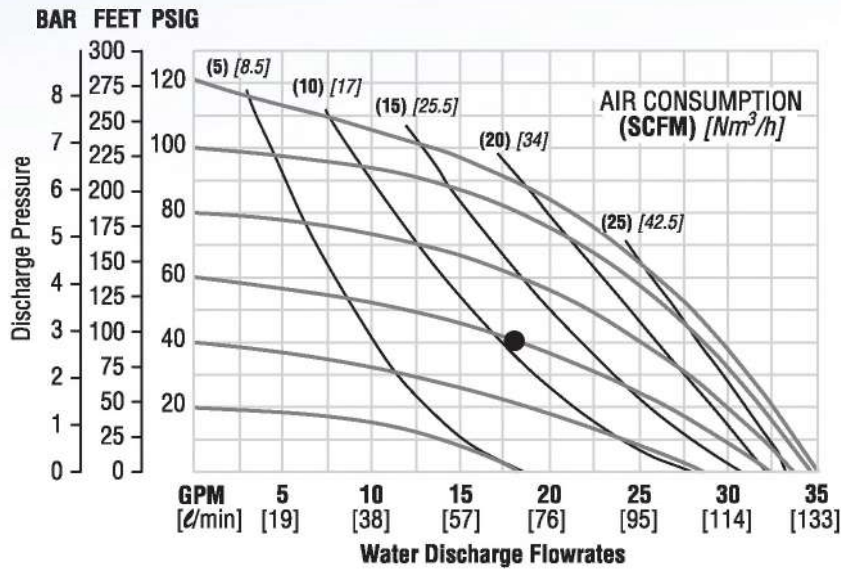
Max Flow (lpm/gpm)	18.1 / 4.8
Porting	NPT / BSP
Max Pressure	102 / 7
Max Solids (mm)	0.4
Wetted End	PP / PVDF
Suction Lift (m)	2.74 (Dry) 9.45 (Wet)



Pump Model	Port Size	Air Inlet Size	Exhaust Port Size	A	B	C	D	E	F	G	H	I	Weight (lb)
	inches	inches	inches	mm inches	mm inches	mm inches	mm inches	mm inches	mm inches	mm inches	mm inches	mm inches	
DJ02NM	1/4 "NPT	1/8"NPT	N/A	145 5.7"	162 6.4"	61 2.4"	5 0.2"	25 1"	140 5.5"	64 2.5"	54 2.1"	114 4.5"	3.3

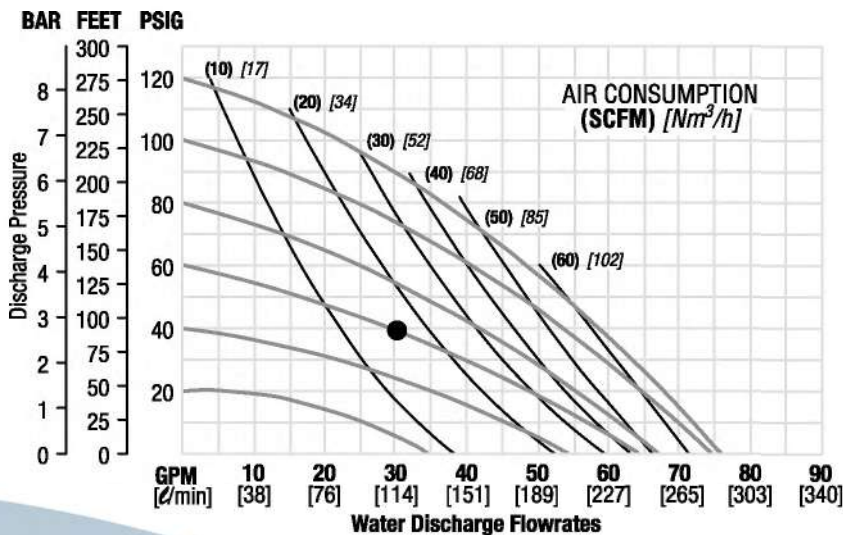
DJ Pump DJ-T Metallic Model

1" DJT2 Metallic Pump Performance

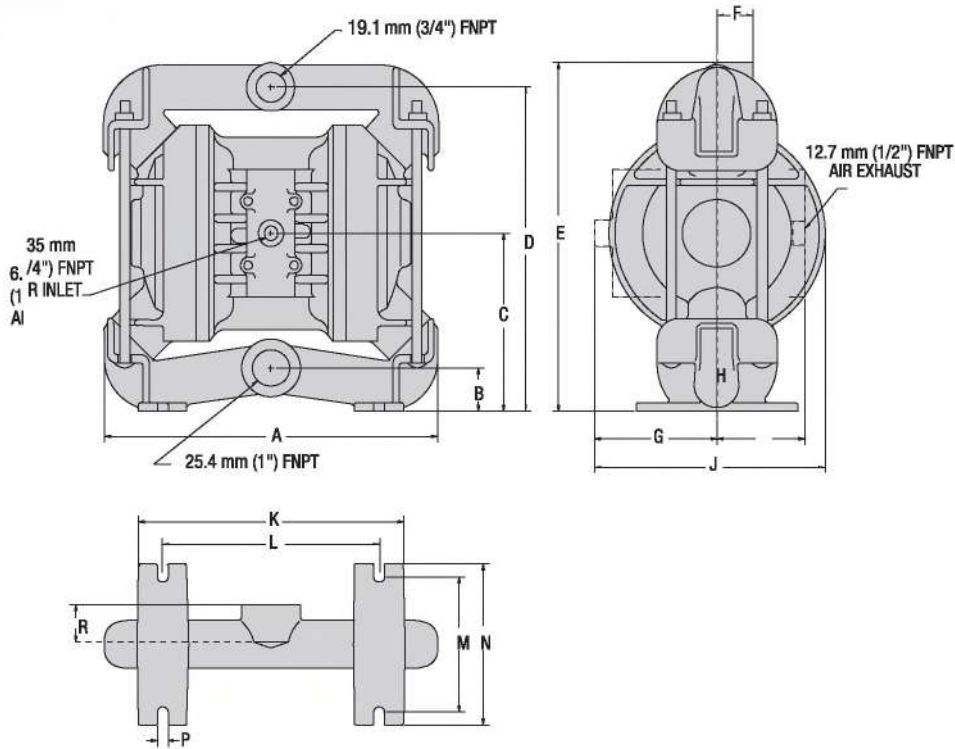


Max Flow (lpm/gpm)	132 / 35
Porting	NPT / BSP
Max Pressure	125/8.6
Max Solids (mm)	3.18
Wetted End	AL
Suction Lift (m)	5.18 (Dry) 9.45 (Wet)

1 1/2" DJT4 Metallic Pump Performance

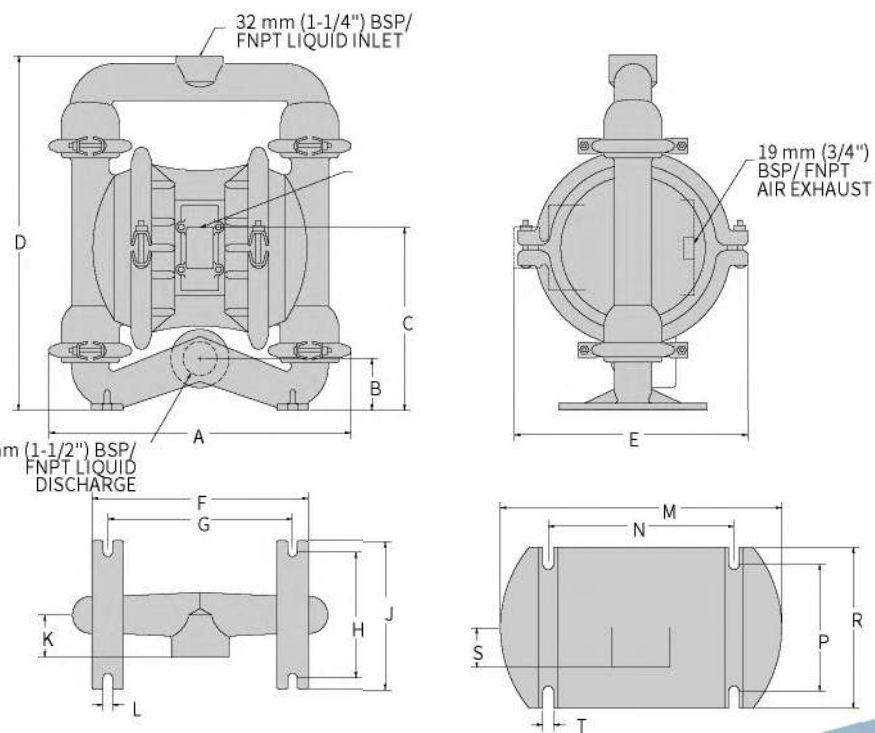


Max Flow (lpm/gpm)	288 / 76
Porting	NPT / BSP
Max Pressure	125/8.6
Max Solids (mm)	4.8
Wetted End	AL
Suction Lift (m)	5.49 (Dry) 8.53 (Wet)



DIMENSIONS - DJT2 (METAL)		
ITEM	METRIC (mm)	STANDARD (inch)
A	267.5	10.53
B	36.5	1.43
C	138.0	5.43
D	254.0	10.00
E	279.4	11.00
F	28.6	1.12
G	95.3	3.75
H	77.0	3.03
J	184.2	7.25
K	209.6	8.25
L	171.5	6.75
M	106.4	4.18
N	127.0	5.00
P	7.9	.31
R	31.8	1.25

BSP threads available.

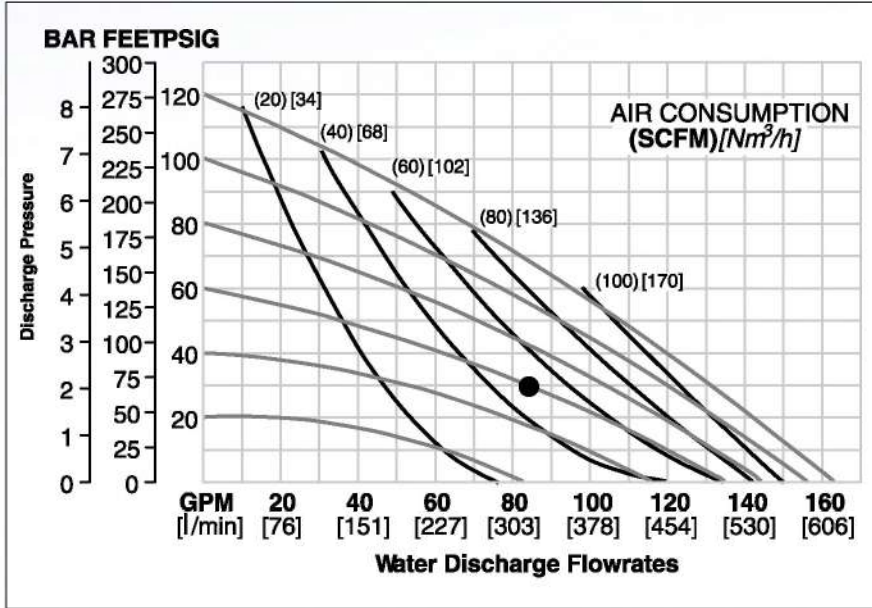


DIMENSIONS - DJT4 (METAL)		
ITEM	METRIC (mm)	STANDARD (inch)
A	391	15.4
B	63	2.5
C	219	8.6
D	442	17.4
E	285	11.2
F	262	10.3
G	224	8.8
H	152	6.0
J	178	7.0
K	67	2.6
L	11	0.4

BSP threads available.

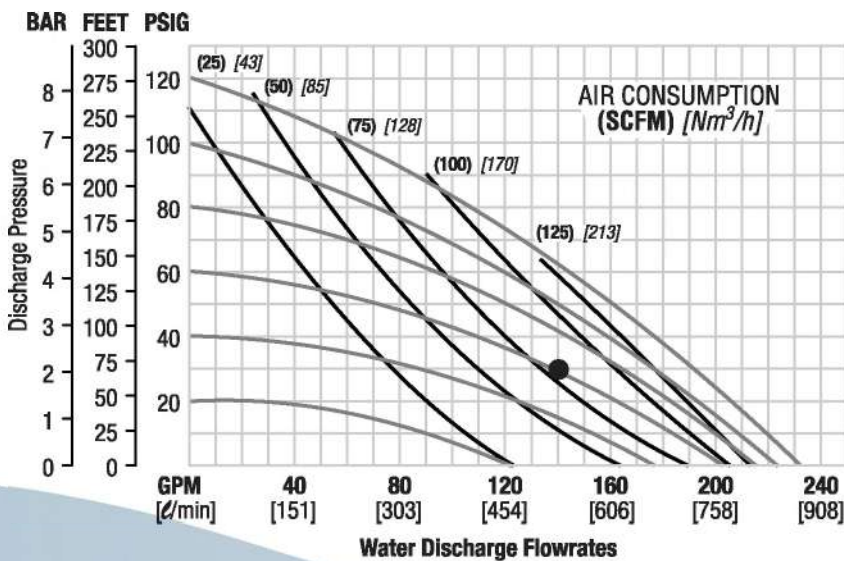
DJ Pump DJ-T Metallic Model

2" DJT8 Metallic Pump Performance

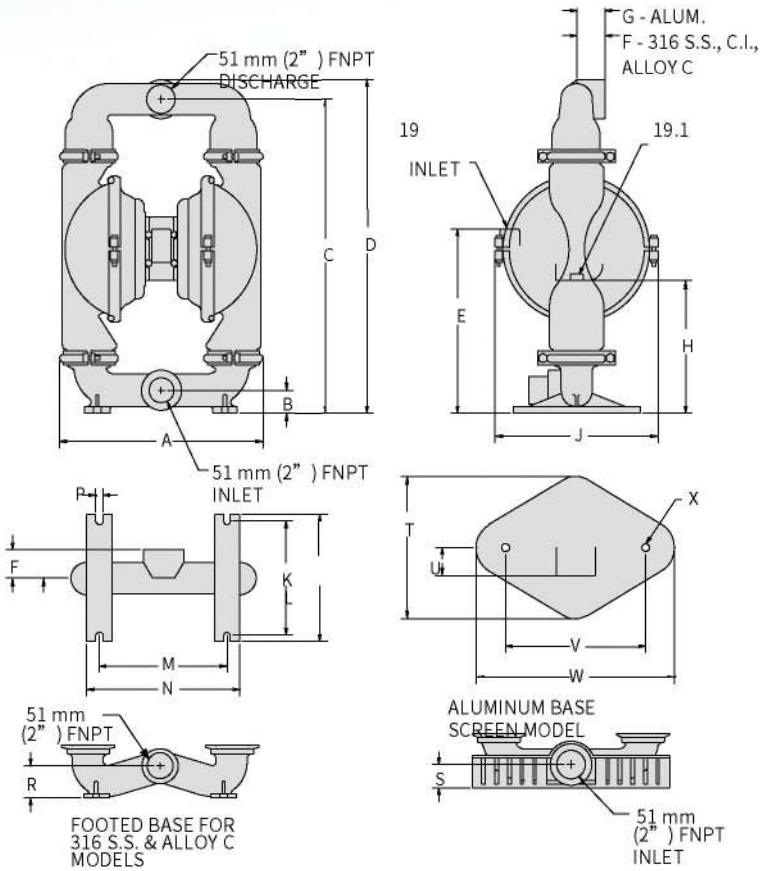


Max Flow (lpm/gpm)	617 / 163
Porting	NPT / BSP
Max Pressure	125/8.6
Max Solids (mm)	6.4
Wetted End	AL
Suction Lift (m)	6.4 (Dry) 9.5 (Wet)

3" DJT15 Metallic Pump Performance



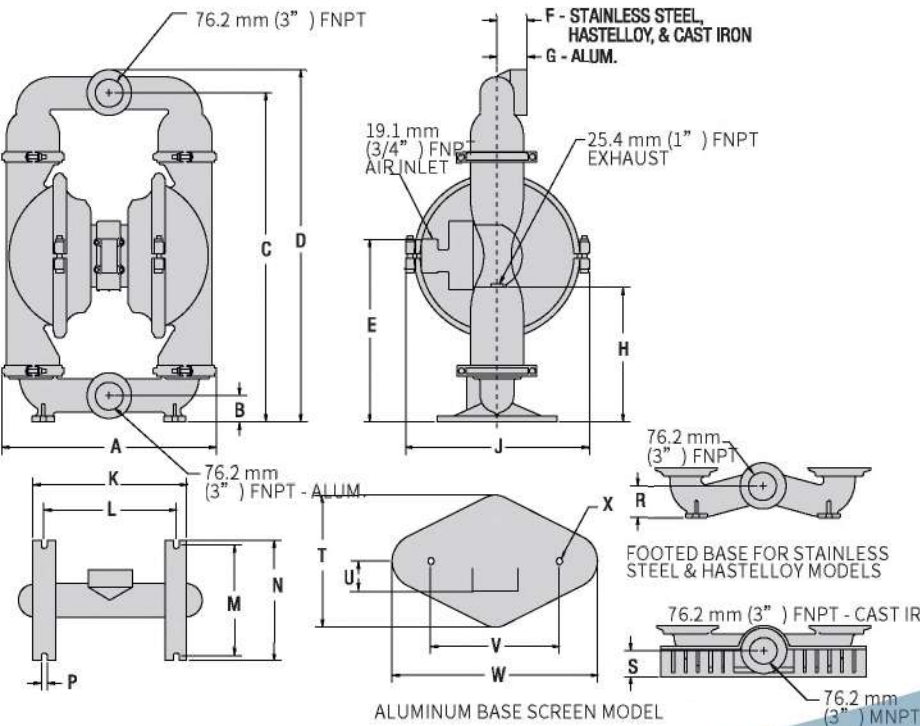
Max Flow (lpm/gpm)	878 / 232
Porting	NPT / BSP
Max Pressure	125/8.6
Max Solids (mm)	9.53
Wetted End	AL
Suction Lift (m)	5.5 (Dry) 9.45 (Wet)



DIMENSIONS - DJT8 (METAL)		
ITEM	METRIC (mm)	STANDARD (inch)
A	404	15.9
B	48	1.9
C	630	24.8
D	668	26.3
E	361	14.2
F	58	2.3
G	61	2.4
H	272	10.7
J	343	13.5
K	229	9.0
L	254	10.0
M	257	10.1
N	312	12.3
P	15	0.6
R	64	2.5
S	51	2.0
T	282	11.1
U	71	2.8
V	282	11.1
W	386	15.2
X	Ø1	Ø.0

BSP threads available.

6



DIMENSIONS - DJT15 METAL		
ITEM	METRIC (mm)	STANDARD (inch)
A	505.2	19.90
B	59.5	2.34
C	760.6	29.96
D	821.7	32.37
E	418.4	16.50
F	71.4	2.81
G	68.3	2.68
H	312.5	12.31
J	425.5	16.75
K	360.4	14.18
L	304.8	12
M	257.8	10.15
N	281.8	11.09
P	15.9	.62
R	69.9	2.75
S	65.8	2.59
T	305.4	12.03
U	42.9	1.68
V	305.4	12.03
W	475.9	18.75
X	Ø15.9	Ø.62

BSP threads available.

3. DJ-A Series

The Pumps Compatible with ARO Pro / Exp



DJ-PD05: AL

DJ-PD20: AL, SS, CI

DJ-PD30: AL, SS, CI

DJ-PA05: PP

DJ-PA10: PP, AL, SS, CI

DJ-PA15: AL, SS

DJ-PA20: AL, SS

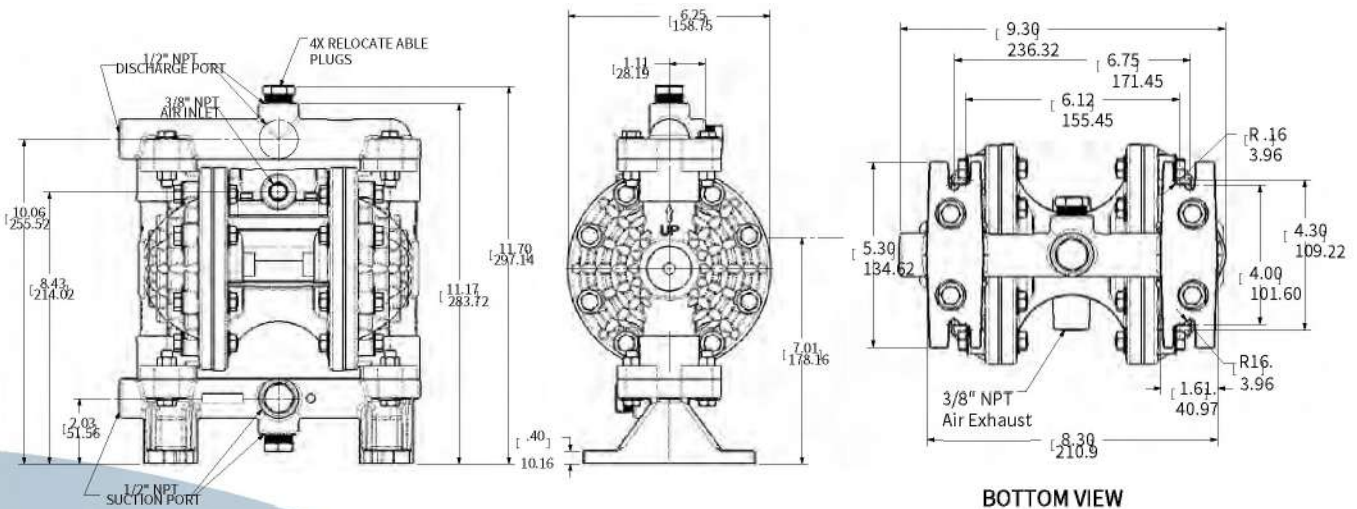
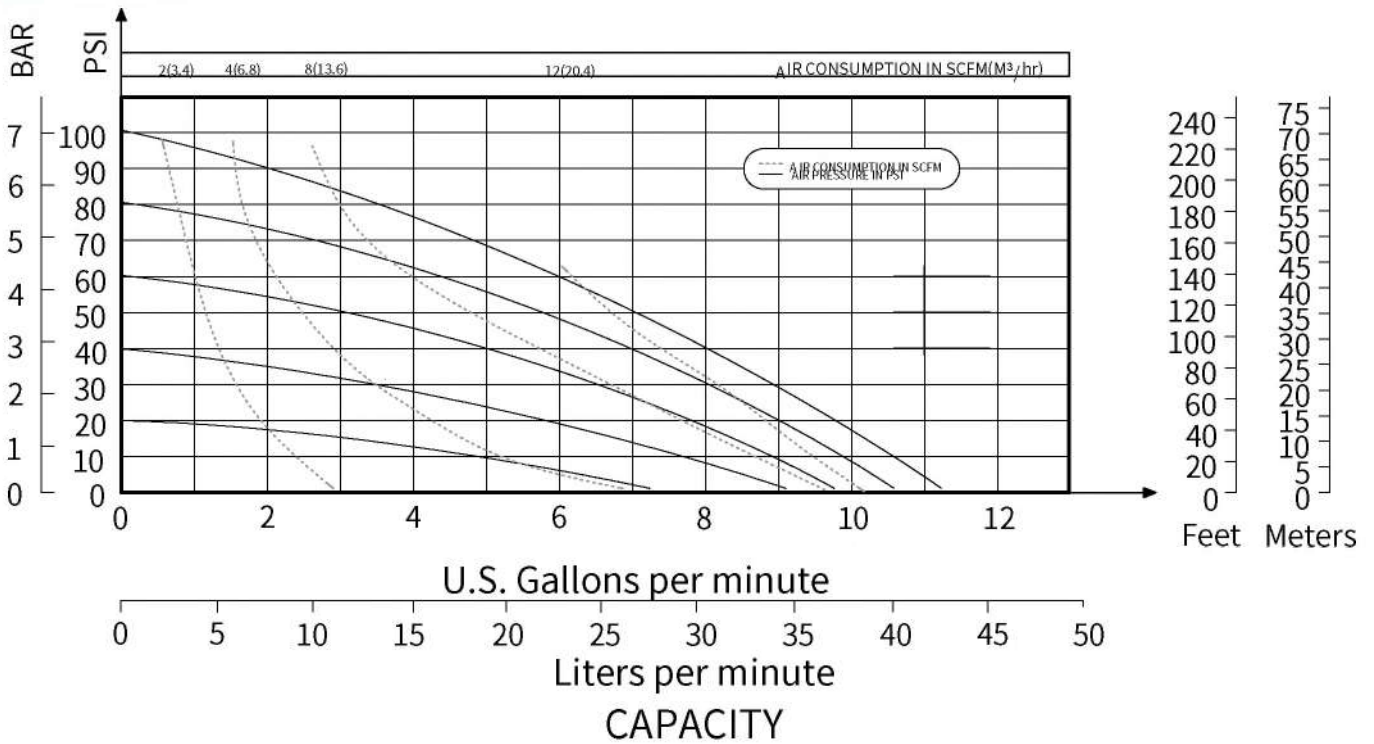
DJ-PA30: AL, SS

DJ Pump Factory Tour



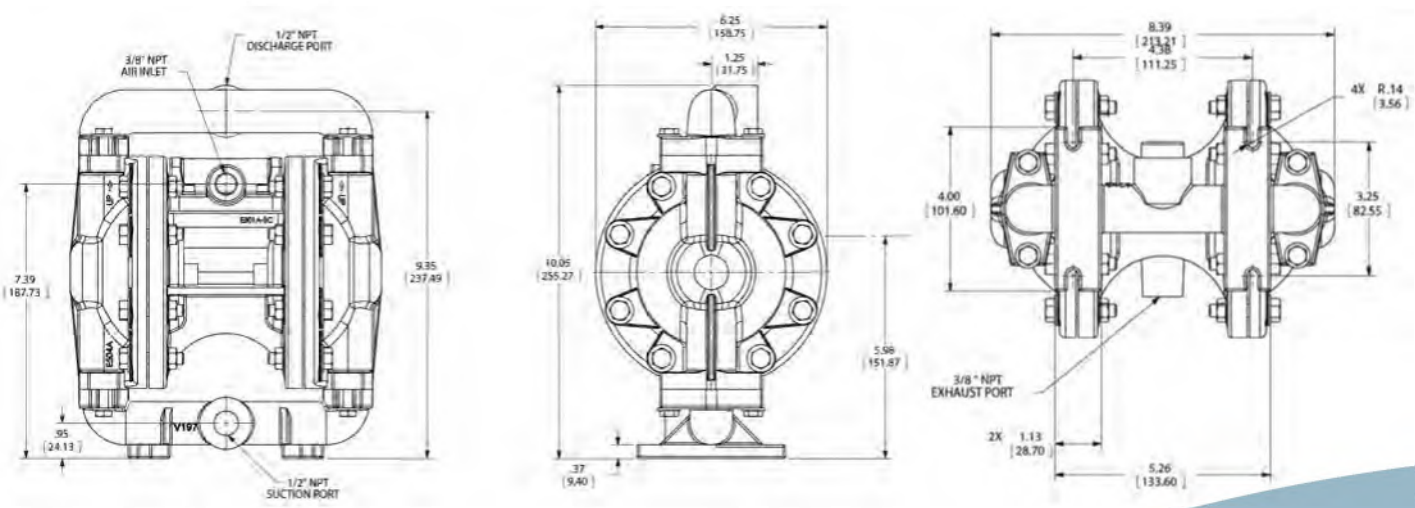
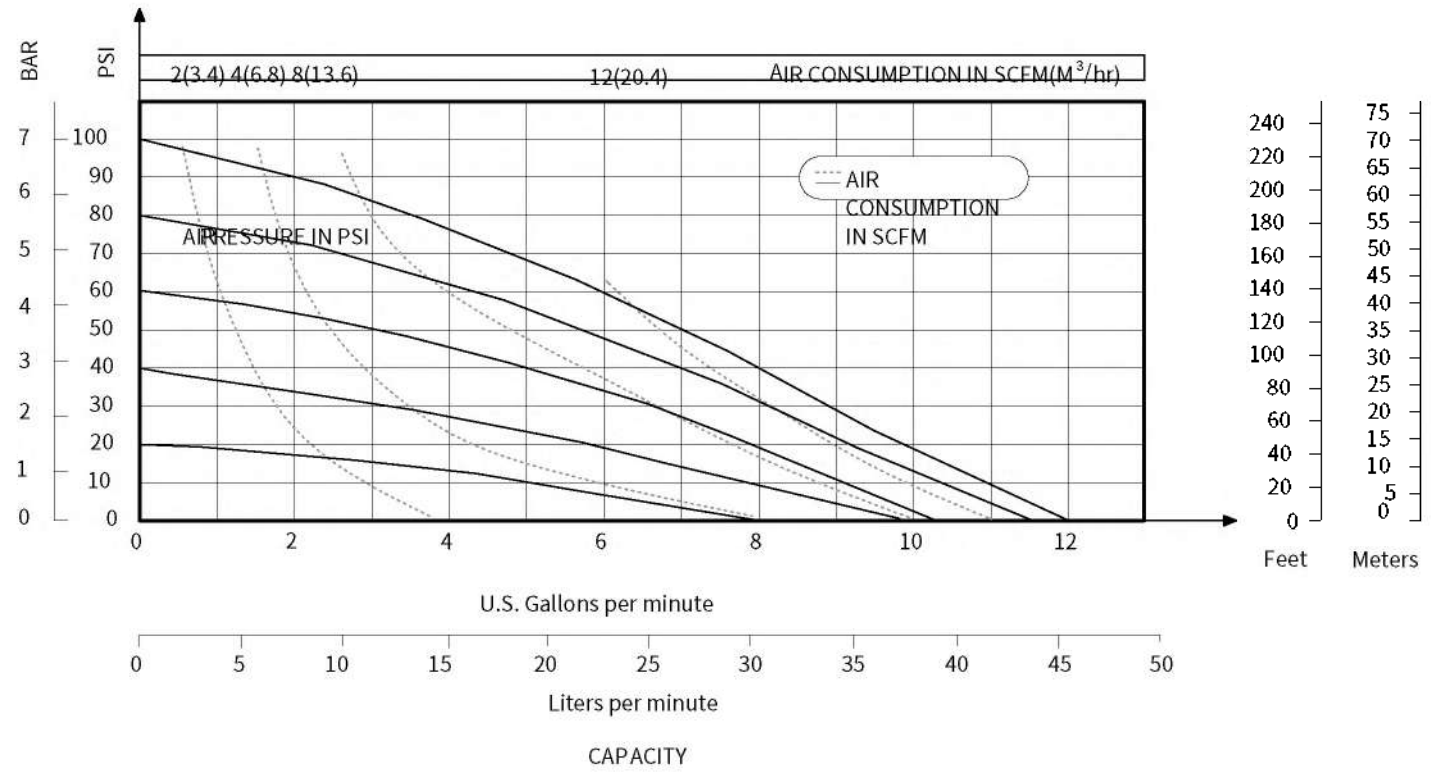
4. DJ-E5 Series The Pumps Comp

DJE5 1/2" PP Non-metallic Pump Performance



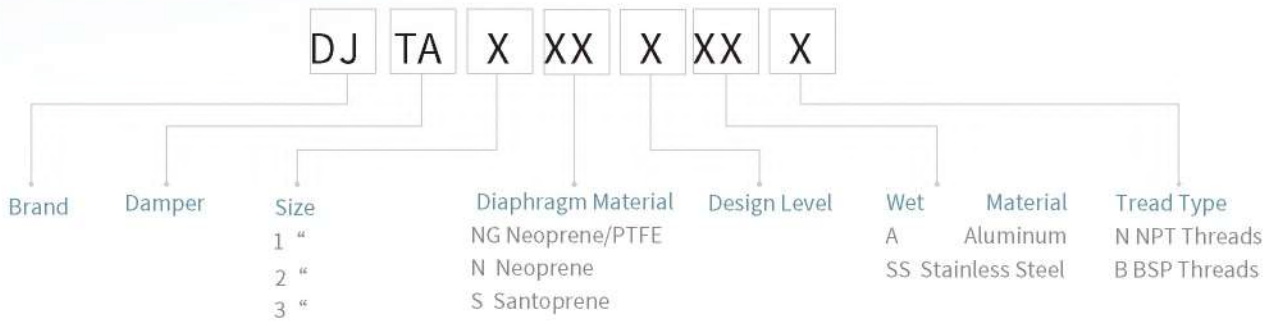
Compatible with Versa-Matic

DJE5 1/2" Metallic Pump Performance



DJ Pump Surge Damper

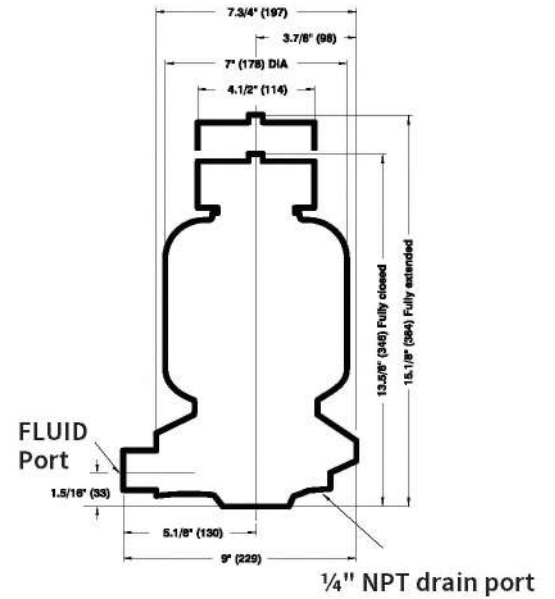
Nomenclature of Surge Damper



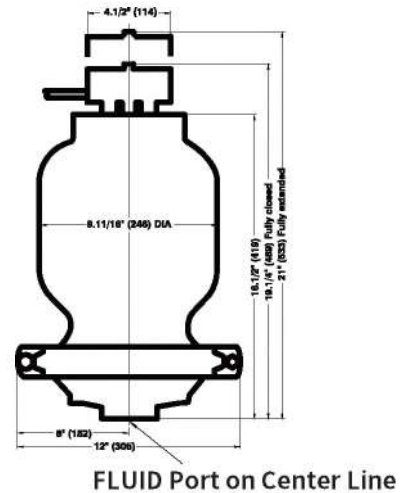
	Model No.	Inlet/Discharge Ports	Wet Material	Diaphragm Material
1	DJTA1, NG-1-A-N	1" NPT Treads	Aluminum	PTFE
2	DJTA1, N-1-A-N	1" NPT Treads	Aluminum	Neoprene
3	DJTA1, S-1-A-N	1" NPT Treads	Aluminum	Santoprene
4	DJTA1, NG-1-SS-N	1" NPT Treads	Stainless Steel	PTFE
5	DJTA1, N-1-SS-N	1" NPT Treads	Stainless Steel	Neoprene
6	DJTA1, S-1-SS-N	1" NPT Treads	Stainless Steel	Santoprene
7	DJTA2, NG-1-A-N	2" NPT Treads	Aluminum	PTFE
8	DJTA2, N-1-A-N	2" NPT Treads	Aluminum	Neoprene
9	DJTA2, S-1-A-N	2" NPT Treads	Aluminum	Santoprene
10	DJTA2, NG-1-SS-N	2" NPT Treads	Stainless Steel	PTFE
11	DJTA2, NG-2-A-N	2" NPT Treads	Aluminum	PTFE
12	DJTA2, N-2-A-N	2" NPT Treads	Aluminum	Neoprene
13	DJTA2, S-2-A-N	2" NPT Treads	Aluminum	Santoprene
14	DJTA2, NG-2-SS-N	2" NPT Treads	Stainless Steel	PTFE
15	DJTA2, N-2-SS-N	2" NPT Treads	Stainless Steel	Neoprene
16	DJTA2, S-2-SS-N	2" NPT Treads	Stainless Steel	Santoprene
17	DJTA3, NG-2-A-N	3" NPT Treads	Aluminum	PTFE
18	DJTA3, N-2-A-N	3" NPT Treads	Aluminum	Neoprene



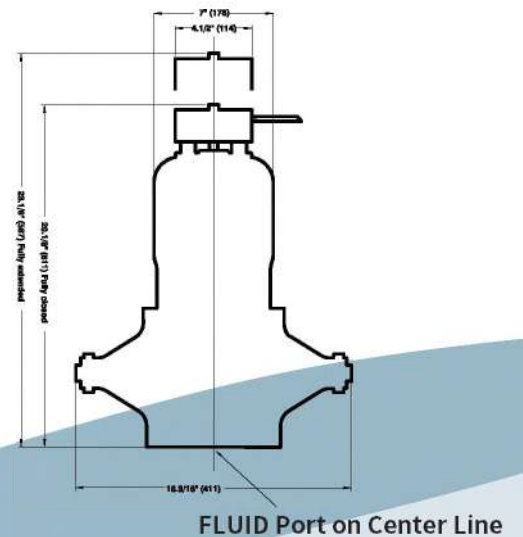
Model & Description	Max. Pressure	Air Inlet Size	Liquid Inlet Size	Dimensions inches (mm)
DJTA1 Designed for 1" pumps. 13 1/4" air inlet hose whip line supplied.	125 psi 8.6 bar Self-charging. Self-venting.	1/4" NPT (external thread)	1" NPT/BSPT	13 5/8" to 15 1/8" height (346mm to 384mm) 9" diameter (229mm) NPT(F)



Model & Description	Max. Pressure	Air Inlet Size	Liquid Inlet Size	Dimensions inches (mm)
DJTA2 Designed for 1 1/2" and 2" pumps. 13 1/4" air inlet hose whip line supplied.	125 psi 8.6 bar Self-charging. Self-venting.	1/4" NPT (external thread)	2" NPT/BSPT	20 1/4" to 23 3/16" height (514mm to 589mm) 12 1/2" diameter (317mm) NPT(F)


















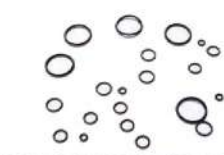
Model & Description	Max. Pressure	Air Inlet Size	Liquid Inlet Size	Dimensions inches (mm)
DJTA3 Designed for 3" and 4" pumps. 13 1/4" air inlet hose whip line supplied.	125 psi 8.6 bar Self-Charging. Self-venting.	1/4" NPT	3" NPT/BSPT	20 1/8" to 23 1/8" height (511mm to 587mm) 16 3/16" diameter (411mm) NPT(F)



DJ Pump Pump Parts

DJ Pump spare parts, Original quality with adequate inventor
Help customers save inventory costs and maintenance costs.

Main Parts

- | | | | |
|---|---|---|---|
| <ul style="list-style-type: none"> ● Diaphragm
Material: Santoprene, PTFE, Buna-N, Viton, EPDM, Neoprene |  | <ul style="list-style-type: none"> ● Air Valve Assembly
Material: Aluminum, Glass Filled Polypropylene |  |
| <ul style="list-style-type: none"> ● Valve Ball
Material: Santoprene, PTFE, Buna-N, Viton, EPDM, Neoprene |  | <ul style="list-style-type: none"> ● Valve Seat
Material: Aluminum, Buna-N, EPDM, Neoprene, Stainless Steel, PTFE, PP, PVDF |  |
| <ul style="list-style-type: none"> ● Pilot Valve Assembly
Material: Glass Filled Polypropylene |  | <ul style="list-style-type: none"> ● Outer plate
Material: Stainless Steel, Aluminum, Iron, PVDF, PP |  |
| <ul style="list-style-type: none"> ● Inner plate
Material: Aluminum |  | <ul style="list-style-type: none"> ● Inlet port
Material: Stainless Steel, Aluminum, Iron, PVDF, PP |  |
| <ul style="list-style-type: none"> ● Hardware
Material: Zinc Plated Steel, Stainless Steel, Carbon Steel |  | <ul style="list-style-type: none"> ● Outlet port
Material: Stainless Steel, Aluminum, Iron, PVDF, PP |  |
| <ul style="list-style-type: none"> ● Sleeve and Spool Set
Material: Aluminum |  | <ul style="list-style-type: none"> ● Gasket
Material: Nitrile |  |
| <ul style="list-style-type: none"> ● Chamber
Material: Stainless Steel, Aluminum, Iron, PVDF, PP |  | <ul style="list-style-type: none"> ● Central Block
Material: Stainless Steel, Aluminum, PP |  |
| <ul style="list-style-type: none"> ● Rod
Material: Stainless Steel |  | <ul style="list-style-type: none"> ● O-ring
Material: Coating fluororubber, PTFE, Neoprene, Buna-N |  |

Repair Kits

- | | | | |
|--|---|---|---|
| <ul style="list-style-type: none"> ● Air End Kit Kit No. see in operating manual
Including Parts: Air Valve Assembly, Pilot Spool Assembly, Gasket (Inner Chamber, Air Valve, Pilot Valve, Air Inlet Cap, Bumper), Seal, Plunger Assembly |  | <ul style="list-style-type: none"> ● Wetted Kit
No. see in operating manual
Parts including: Diaphragm Valve Ball Valve |  |
|--|---|---|---|

DJ Pump Accessories

Liquid Level Controller

When the floating ball moves along the horizontal axis under the liquid buoyancy, driving the magnet, outputting the shutdown signal, which can be used for alarm prompt or remote control.

Manual Ball Valve

Good wear resistance, good sealing performance, convenient operation and long service life.



DJ Pump® Soft Connection

Size based on pump model. Reduces the stress from suction and discharge ports. Note: Stainless Steel, with fluorine lined choice



DJ Pump® Muffler

Reducing the noise and the dust into the components in the air components. Material with PP nylon and metal, and metal muffler will reduce the probability of icing relativity.



Liquid Filter

Which can meet all kinds of filtration precision requirements and keep enough flow ability.



DJ Pump® Air Filter, Regulator

Provides dry and clean air to pump. Air Filter/Regulator offers easy installation and maintenance.



Flow Meter

Which can measuring flow accurately, improving the production efficiency. With accurate reliable and wide application.



Surge Damper

Provides pulse-free flow, for steadier pressure of system and lower noise.



Remark:

По вопросам продаж и поддержки обращайтесь:

Алматы (727)345-47-04
Ангарск (3955)60-70-56
Архангельск (8182)63-90-72
Астрахань (8512)99-46-04
Барнаул (3852)73-04-60
Белгород (4722)40-23-64
Благовещенск (4162)22-76-07
Брянск (4832)59-03-52
Владивосток (423)249-28-31
Владикавказ (8672)28-90-48
Владимир (4922)49-43-18
Волгоград (844)278-03-48
Вологда (8172)26-41-59
Воронеж (473)204-51-73
Екатеринбург (343)384-55-89

Иваново (4932)77-34-06
Ижевск (3412)26-03-58
Иркутск (395)279-98-46
Казань (843)206-01-48
Калининград (4012)72-03-81
Калуга (4842)92-23-67
Кемерово (3842)65-04-62
Киров (8332)68-02-04
Коломна (4966)23-41-49
Кострома (4942)77-07-48
Краснодар (861)203-40-90
Красноярск (391)204-63-61
Курск (4712)77-13-04
Курган (3522)50-90-47
Липецк (4742)52-20-81

Магнитогорск (3519)55-03-13
Москва (495)268-04-70
Мурманск (8152)59-64-93
Набережные Челны (8552)20-53-41
Нижегород (831)429-08-12
Новокузнецк (3843)20-46-81
Ноябрьск (3496)41-32-12
Новосибирск (383)227-86-73
Омск (3812)21-46-40
Орел (4862)44-53-42
Оренбург (3532)37-68-04
Пенза (8412)22-31-16
Петрозаводск (8142)55-98-37
Псков (8112)59-10-37
Пермь (342)205-81-47

Ростов-на-Дону (863)308-18-15
Рязань (4912)46-61-64
Самара (846)206-03-16
Санкт-Петербург (812)309-46-40
Саратов (845)249-38-78
Севастополь (8692)22-31-93
Саранск (8342)22-96-24
Симферополь (3652)67-13-56
Смоленск (4812)29-41-54
Сочи (862)225-72-31
Ставрополь (8652)20-65-13
Сургут (3462)77-98-35
Сыктывкар (8212)25-95-17
Тамбов (4752)50-40-97
Тверь (4822)63-31-35

Тольятти (8482)63-91-07
Томск (3822)98-41-53
Тула (4872)33-79-87
Тюмень (3452)66-21-18
Ульяновск (8422)24-23-59
Улан-Удэ (3012)59-97-51
Уфа (347)229-48-12
Хабаровск (4212)92-98-04
Чебоксары (8352)28-53-07
Челябинск (351)202-03-61
Череповец (8202)49-02-64
Чита (3022)38-34-83
Якутск (4112)23-90-97
Ярославль (4852)69-52-93

Россия +7(495)268-04-70

Казахстан +7(727)345-47-04

Беларусь +(375)257-127-884

Узбекистан +998(71)205-18-59

Киргизия +996(312)96-26-47

эл.почта: dj@nt-rt.ru || сайт: <https://dj@nt-rt.ru/>